

# PRODUCT INFORMATION PACKET

Model No: FE1056SF  
Catalog No: FE1056SF

Condenser Fans Motor, 1/2 HP, 1 Ph, 60 Hz, 208-230 V, 1075 RPM, 1 Speed, 48 Frame, TEAO



Regal and are trademarks of Regal Rexnord Corporation or one of its affiliated companies.  
©2022 Regal Rexnord Corporation, All Rights Reserved. MC017097E

### Nameplate Specifications

|                     |                           |                    |            |
|---------------------|---------------------------|--------------------|------------|
| Output HP           | 1/2 Hp                    | Output KW          | 0.37 kW    |
| Frequency           | 60 Hz                     | Voltage            | 208-230 V  |
| Current             | 4.0 A                     | Speed              | 1075 rpm   |
| Service Factor      | 1                         | Phase              | 1          |
| Efficiency          | 69.1 %                    | Duty               | Air Over   |
| Insulation Class    | F                         | Frame              | 48         |
| Enclosure           | Totally Enclosed Air Over | Thermal Protection | Automatic  |
| Ambient Temperature | 70 °C                     | UL                 | Recognized |
| CSA                 | Y                         | CE                 | N          |
| Number of Speeds    | 1                         |                    |            |

### Technical Specifications

|                    |                           |                       |                 |
|--------------------|---------------------------|-----------------------|-----------------|
| Electrical Type    | Permanent Split Capacitor | Starting Method       | Across The Line |
| Poles              | 6                         | Rotation              | Reversible      |
| Mounting           | Extended Studs            | Motor Orientation     | Any             |
| Drive End Bearing  | Ball                      | Opp Drive End Bearing | Ball            |
| Frame Material     | Rolled Steel              | Shaft Type            | Double Flat     |
| Overall Length     | 12.74 in                  | Frame Length          | 4.75 in         |
| Shaft Diameter     | 0.500 in                  | Shaft Extension       | 6.5 in          |
| Connection Drawing | 614131-242                | Outline Drawing       | FE1056SF_FA     |

This is an uncontrolled document once printed or downloaded and is subject to change without notice. Date Created:09/15/2022

GENERAL INFORMATION:

SHAFT RUNOUT: .001 [.03] T.I.R. PER INCH LENGTH OF EXTENSION

BEARINGS: BALL

MOUNTING POSITION: ALL ANGLE

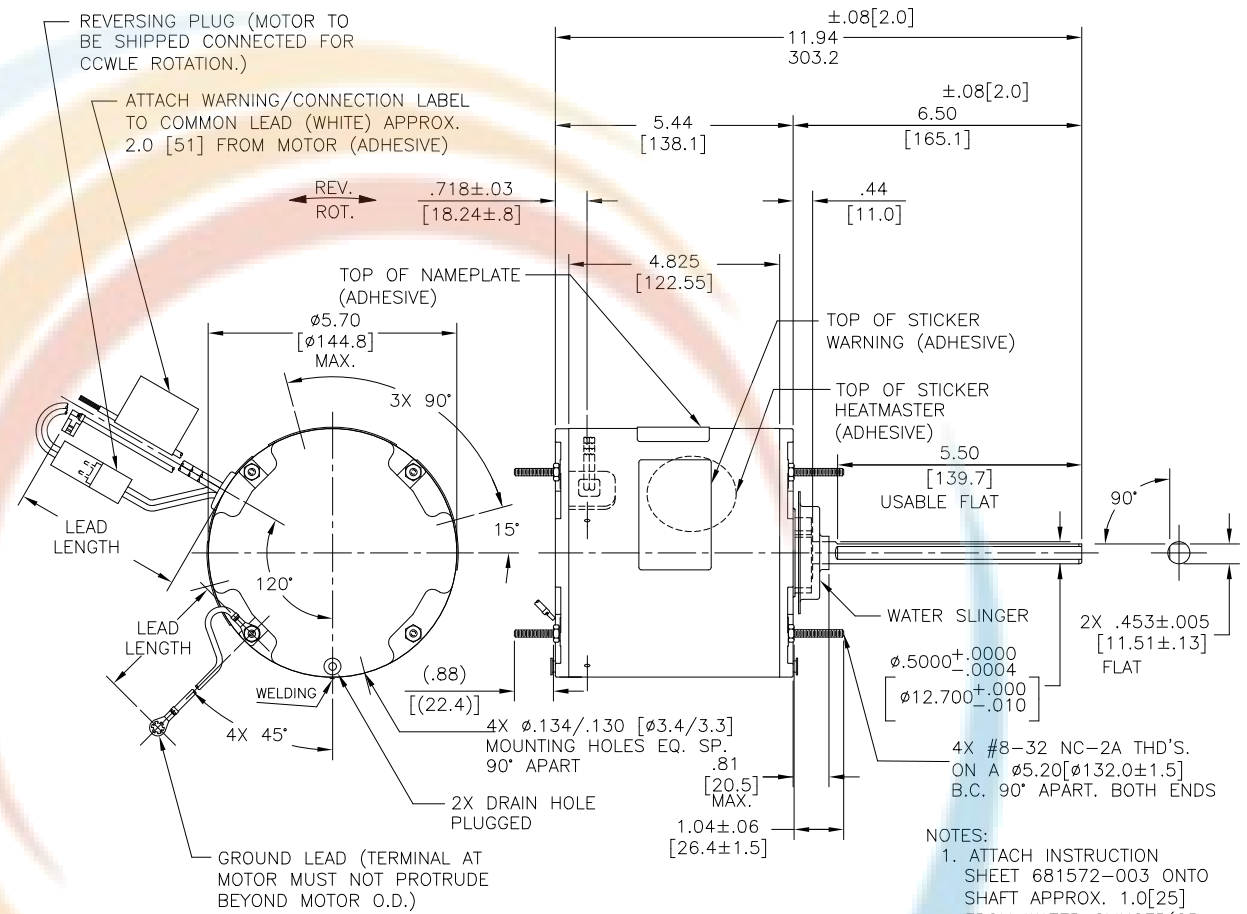
ELECTRICAL DATA:

OVERLOAD PROTECTOR: AUTOMATIC RESET (T.I. 7AM 304)

LINE LEADS: NO. 18 GA., .06 [1.5] THK. XLP 125°C INSUL.

REVERSING PLUGS: NO. 18 GA., .03 [.8] THK. XLP 125°C INSUL.

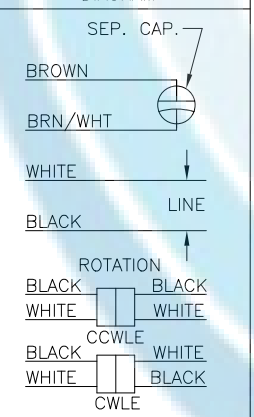
GROUND LEAD: NO. 18 GA., .03 [.8] THK. (GREEN) INSUL.



SAMPLE SM19-407 NAMEPLATE DATA:

EXTERNAL CONNECTION DIAGRAM

MODEL NO.: 5KCP39PGDD682S  
 CUST. P/N: FE1056SF  
 HP: 1/2  
 ROT.: REVERSIBLE  
 RPM: 1075  
 TYPE: UF  
 FRAME: 48  
 VOLTS: 208-230  
 PH: 1  
 AMPS: 4.0  
 HZ: 60  
 INS.: F  
 AMB.: 70°C  
 DUTY: AIR OVER  
 CAP.: 10 MFD/370 V  
 THERMALLY PROTECTED



614131-242

| COLOR          | LENGTH                | TERMINAL OR STRIP LENGTH |
|----------------|-----------------------|--------------------------|
| GREEN (GROUND) | 12.0/13.0 [305/330]   | #10 EYELET               |
| BLACK/WHITE    | 3.0/5.0 [76/127]      | REVERSING PLUG           |
| BROWN          | 48.0/51.0 [1219/1295] | .25 [6.4] FLAG           |
| BROWN/WHITE    | 48.0/51.0 [1219/1295] | .25 [6.4] FLAG           |
| WHITE          | 48.0/51.0 [1219/1295] | .50 [12.7] SKIN          |
| BLACK          | 48.0/51.0 [1219/1295] | .50 [12.7] SKIN          |

REGAL-BELOIT CORPORATION (RBC) PROVIDES TECHNICAL ASSISTANCE TO OUR CUSTOMERS IN SEVERAL AREAS. SINCE RBC DOES NOT RECEIVE ALL DATA CONCERNING THE USE AND APPLICATION OF THE MOTOR, THE SUITABILITY OF THE MOTOR FOR THE APPLICATION MUST BE DETERMINED BY THE CUSTOMER.

DIMENSIONS WITHOUT TOLERANCES ARE FOR REFERENCE ONLY.

|                  |          |
|------------------|----------|
| MAIN FRAME - OLE | ENCLOSED |
| END FRAME - OLE  | ENCLOSED |
| MAIN FRAME - LE  | ENCLOSED |
| END FRAME - LE   | ENCLOSED |

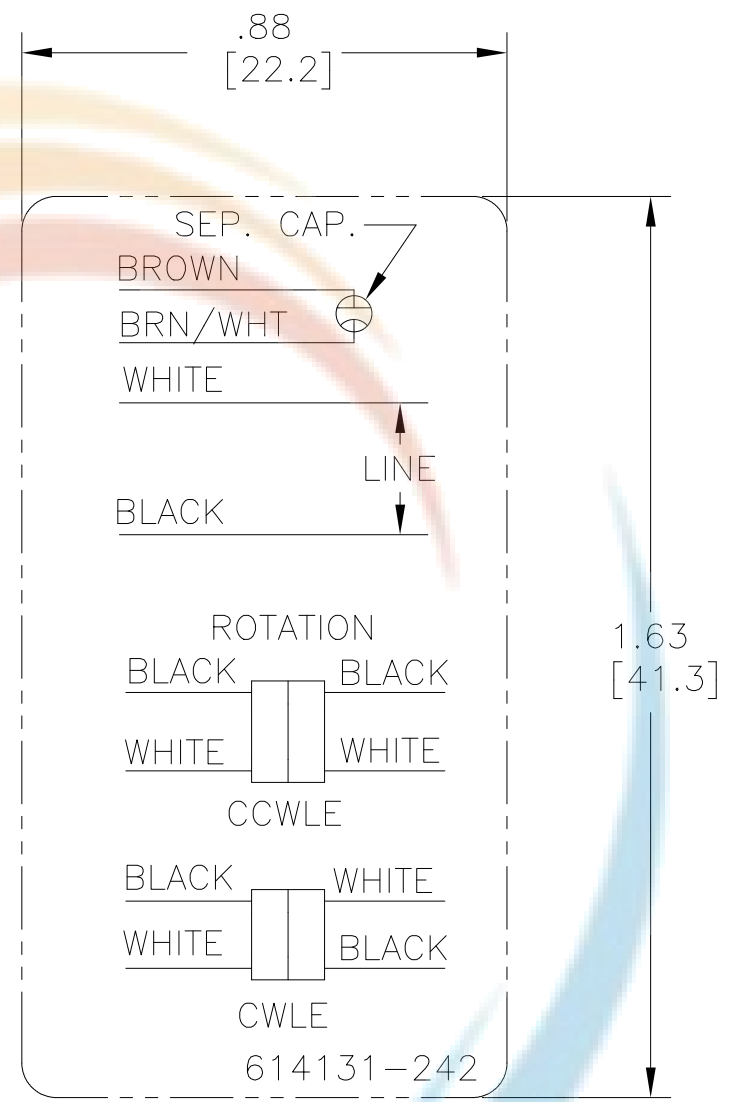
- NOTES:
- ATTACH INSTRUCTION SHEET 681572-003 ONTO SHAFT APPROX. 1.0[25] FROM WATER SLINGER(OR 69P9-3 ONLY USED IN MEXICO)
  - (4)SCREWS N194P1504B9 & (4) EXTRA HEX NUTS N23815B9 TO BE PUT IN A POLYBAG.
  - DISTRIBUTION SERVICE CUST. P/N: FE1056SF GRAINGER CUST. P/N: 4MB63
  - ALL LABEL READ FROM LE
  - SPRNG SHIM IN OLE SIDE

|          |                      |
|----------|----------------------|
| CUSTOMER | DISTRIBUTION SERVICE |
|----------|----------------------|

|   |             |          |
|---|-------------|----------|
| DRAWING REVISION  | REVISION BY | DATE     |
| ECO   | MG          | 16-04-22 |
| ECO-0216351   | LS          | 16-04-22 |
| ECO DESCRIPTION   |             |          |
| ENERGY CONSERVATIONIST STICKER IS REMOVED   |             |          |
| <small>COPYRIGHT REGAL-BELOIT AMERICA, INC. ALL RIGHTS RESERVED. PROPRIETARY AND CONFIDENTIAL INFORMATION - THIS DOCUMENT IS THE PROPERTY OF REGAL-BELOIT AMERICA, INC. (OWNER) AND COMPANY OWNER'S PROPRIETARY INFORMATION. ANY PERSON, CORPORATION OR OTHER ENTITY, DUPLICATED, AND/OR USED, EXCEPT BY RECEIVING IT, TO AGREE THAT IT, AND/OR ANY PART OF IT, SHALL NOT BE DISCLOSED TO ANY PERSON, CORPORATION OR OTHER ENTITY, DUPLICATED, AND/OR USED, EXCEPT AS EXPRESSLY APPROVED IN WRITING IN ADVANCE BY OWNER. THIS DOCUMENT SHALL BE RETURNED TO OWNER UPON REQUEST. IT MAY BE SUBJECT TO CERTAIN RESTRICTIONS UNDER APPLICABLE EXPORT CONTROL LAWS AND REGULATIONS.</small> |             |          |


|                        |             |
|------------------------|-------------|
| DRAWN BY:              | DATE:       |
| MK                     | 13.11.19    |
| APPROVED BY:           | DATE:       |
| LS                     | 13.11.19    |
| PROCESS/FINISH         | MATERIAL    |
|                        |             |
| THIRD ANGLE PROJECTION | SIZE DWG NO |
|                        | C           |

|                         |       |
|-------------------------|-------|
|                         |       |
| DESCRIPTION             |       |
| MODEL-RFHP-48FR OUTLINE |       |
| MATERIAL                |       |
| -                       |       |
| SIZE DWG NO             | SHEET |
| FE1056SF_FA             | 1     |



NOTES:

1. FOR USE WITH 614129 NAMEPLATE BLANK
2. — — — — — INDICATES DIMENSION LIMITS
3. DIE TO BE MADE FROM MASTER SUPPLIED BY REGAL REXNORD CORPORATION
4. DIE MUST PRODUCE A LEGIBLE IMPRESSION.

|   |  |                          |  |                    |  |  |         |           |       |                        |                                   |   |                |            |
|---|--|--------------------------|--|--------------------|--|--|---------|-----------|-------|------------------------|-----------------------------------|---|----------------|------------|
| DRAWING REVISION<br>H   |  | REVISION BY<br>J. RUPERT |  | DATE<br>03-16-2022 |  | TOLERANCES UNLESS OTHERWISE SPECIFIED  |         |           |       | DRAWN BY:<br>YL        |                                   |  <b>Regal Beloit America, Inc.</b> |                |            |
| ECO<br>NMR-0213140  |  | APPROVED BY<br>J. RUPERT |  | DATE<br>03-16-2022 |  | DEC.   | INCH    | mm        | ANGLE | DATE:<br>04-15-2011    | DESCRIPTION<br>CONNECTION DIAGRAM |   |                |            |
| ECO DESCRIPTION<br>REVISED FOR UP ISSUED  |  |                          |  |                    |  | .X   | ±0.1    | [±2.5]    | ±0.5° | APPROVED BY:<br>HZ     | EXTERNAL                          |   |                |            |
| <small>COPYRIGHT REGAL BELOIT AMERICA, INC. ALL RIGHTS RESERVED. PROPRIETARY AND CONFIDENTIAL INFORMATION - THIS DOCUMENT IS THE PROPERTY OF REGAL BELOIT AMERICA, INC. ("OWNER") AND CONTAINS OWNER'S PROPRIETARY INFORMATION. ANY PERSON, CORPORATION OR OTHER FIRM RECEIVING IT IS DEEMED, BY RECEIVING IT, TO AGREE THAT IT, AND/OR ANY PART OF IT, SHALL NOT BE DISCLOSED TO ANY PERSON, CORPORATION OR OTHER ENTITY, DUPLICATED, AND/OR USED, EXCEPT AS EXPRESSLY APPROVED IN WRITING IN ADVANCE BY OWNER. THIS DOCUMENT SHALL BE RETURNED TO OWNER UPON REQUEST. IT MAY BE SUBJECT TO CERTAIN RESTRICTIONS UNDER APPLICABLE EXPORT CONTROL LAWS AND REGULATIONS.</small> |  |                          |  |                    |  | .XX  | ±0.02   | [±0.51]   |       | DATE:<br>04-15-2011    | MATERIAL                          |   | PROCESS/FINISH |            |
|   |  |                          |  |                    |  | .XXX   | ±0.005  | [±0.127]  |       | REFERENCE              | SIZE                              | DWG NO  |                |            |
|   |  |                          |  |                    |  | .XXXX  | ±0.0005 | [±0.0127] |       | THIRD ANGLE PROJECTION | A                                 | 4 of 4  | 614131-242     | SHEET<br>1 |
|   |  |                          |  |                    |  | REMOVE BURRS & BREAK SHARP EDGES .003/.015 [0.076/.381] X 45° CORNER FILLETS R.02 [.51] MACHINED SURFACES INCH <sup>125</sup> / mm <sup>3.2</sup> mm SHOWN IN [BRACKETS] |         |           |       |                        |                                   |   |                |            |