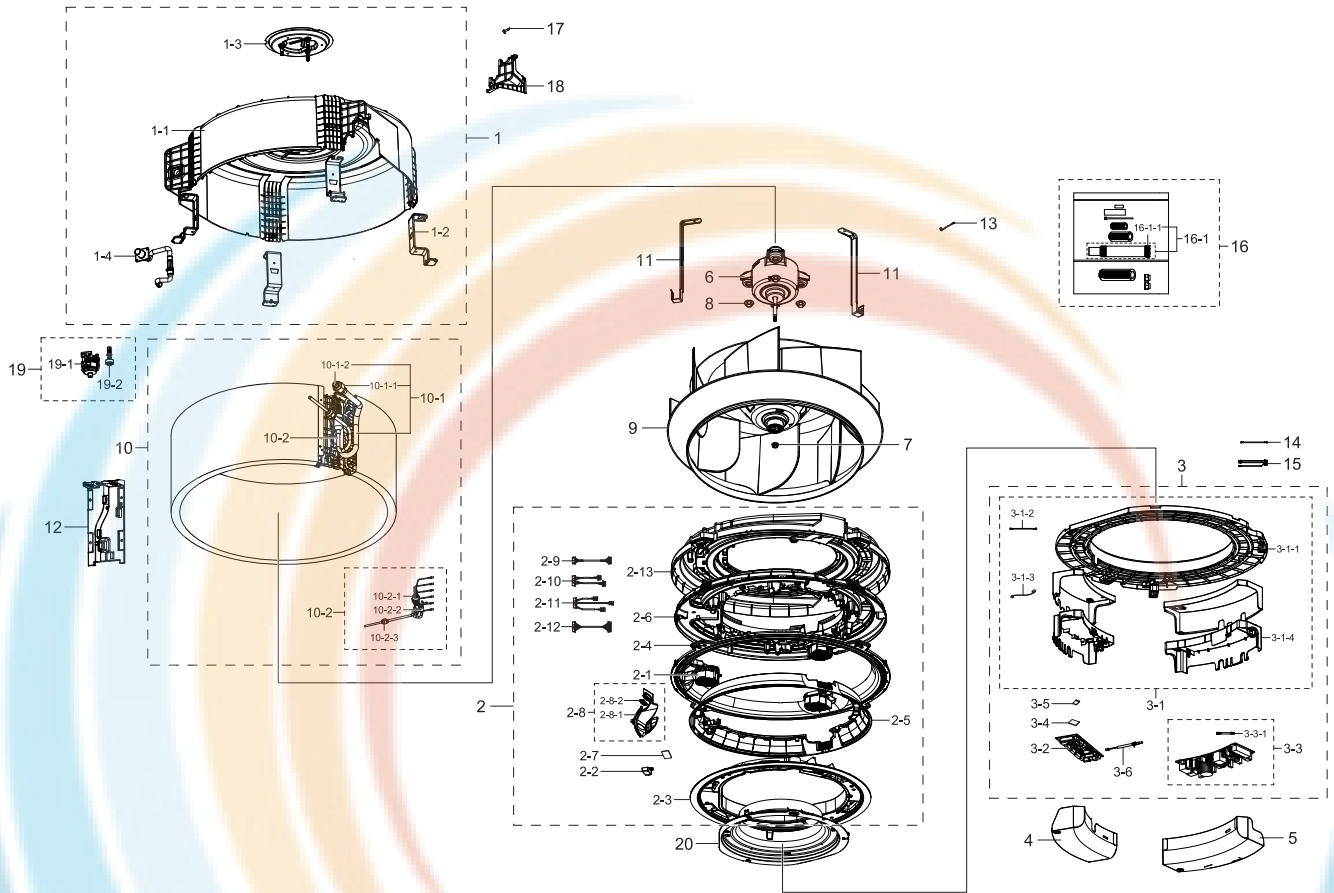


# 1. AM009KN4DCH/AA (manufactured 12/2016 or earlier)

## Exploded View



## Parts List

No.	Lvl.	Loc.	Material Code	Description & Specification	SNA	Qty.
1	2	A2676	DB90-09381A	ASSY CABI BODY; 360CST SML	SA	1
1-1	3		DB61-06571A	BODY; HIPS,T2.0,BLACK,S	SA	1
1-2	3	P0229	DB61-06585A	PLATE-HANGER; PLATE-HANGER,GI-SGCC,T1.6	SA	4
1-3	3	A2803	DB90-05821A	ASSY BRACKET MOTOR; Global 4W-CST	SA	1
1-4	3		DB94-06051A	ASSY HOSE DRAIN; AC145KN4PBH1	SA	1
2	2		DB90-09387A	ASSY FRAME OUTLET; 360CST	SA	1
2-1	3		DB31-00674A	MOTOR BLDC FAN; Booster Fan motor,2800,12	SA	3
2-2	3		DB61-06616A	CASE PCB-SUB; PC	SA	1
2-3	3		DB90-09379A	ASSY COVER-UP; 360CST	SA	1
2-4	3		DB90-09396A	ASSY FRAME OUTLET-UP; 360CST LRG	SA	1
2-5	3		DB90-09397A	ASSY COVER-OUTLET; 360CST	SA	1
2-6	3		DB90-09463A	ASSY FRAME OUTLET-LOW; 360CST	SA	1
2-7	3	A0694	DB92-02805A	ASSY PCB SUB; RECEIVER,DVM NASA_MASTER_N,	SA	1

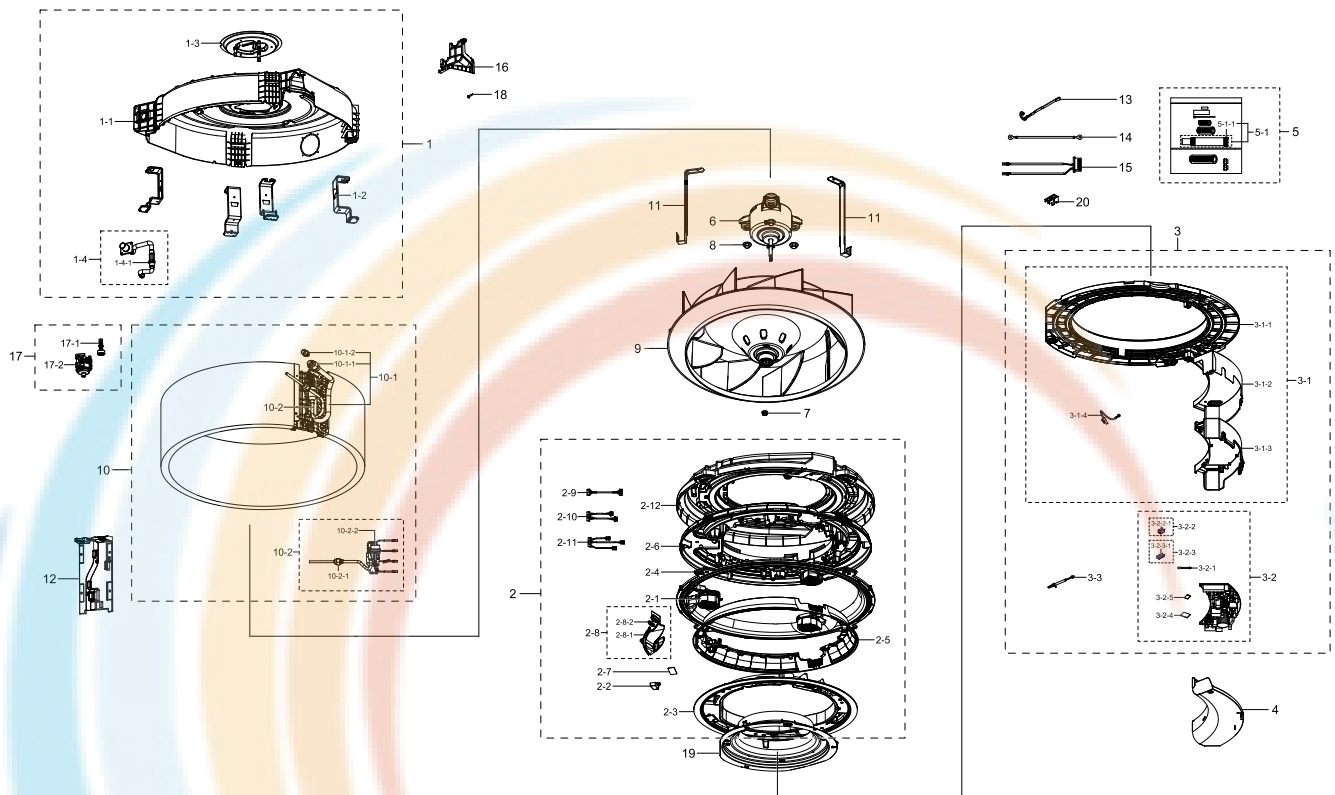
Exploded Views and Parts List

No.	Lvl.	Loc.	Material Code	Description & Specification	SNA	Qty.
2-8	3	A0882	DB93-15822A	ASSY DISPLAY; 360CST	SA	1
2-8-1	4		DB64-03204A	WINDOW DISPLAY-B; WINDOW DISPLAY-B,PMMA,T	SA	1
2-8-2	4		DB92-03855A	ASSY PCB DISPLAY; DISPLAY PBA,AC9000K,97*	SA	1
2-9	3		DB93-06159A	ASSY CONNECTOR WIRE-DISPLAY; 10,2095,26,B	SA	1
2-10	3		DB93-15860A	ASSY CONNECTOR WIRE-DC SIGNAL; 11,2095,24	SA	1
2-11	3		DB93-15861A	ASSY CONNECTOR WIRE-DC SIGNAL; 12,2095,26	SA	1
2-12	3		DB93-15862A	ASSY CONNECTOR WIRE-DC SIGNAL; 15,2095,26	SA	1
2-13	3	A2303	DB94-06052A	ASSY TRAY DRAIN; AC145KN4PBH1	SA	1
3	2		DB92-03857D	ASSY KIT; ASSY KIT,AC9000K,360 CST,DVM AS	SNA	1
3-1	3		DB90-09386B	ASSY CASE CONTROL; 360CST NORTH AMERICA	SA	1
3-1-1	4	C1140	DB63-03763A	COVER-BELL MOUTH; AC145KN4PBH1,HIPS,T2.0,	SA	1
3-1-2	4	A0646	DB93-07990A	ASSY CONNECTOR WIRE-EARTH; 1,1015,18,YEL/	SA	1
3-1-3	4	A0646	DB93-08805B	ASSY CONNECTOR WIRE-EARTH; 1,1015,18,YEL/	SA	1
3-1-4	4		DB90-09444B	ASSY CASE CONTROL-LOW; 360CST NORTH AMERI	SA	1
3-2	3	A2748	DB92-03856B	ASSY PCB MAIN; MAIN PBA,AM6000H,160*60.5,	SA	1
3-3	3		DB92-03854A	ASSY PCB POWER; POWER PBA,AC9000K,194*93,	SA	1
3-3-1	4		DB93-13688A	ASSY CONNECTOR WIRE-DC SIGNAL; 2,1007,24,	SA	1
3-4	3		DB92-02793A	ASSY FUNCTION; COMM,DVM NASA_CST,Y	SA	1
3-5	3		DB93-12483A	ASSY PCB SUB-EEPROM; SUB,DVMPLUS4 UP,20*2	SA	1
3-6	3	A3189	DB95-05009A	ASSY THERMISTOR IN-ROOM; 10Kohm 3%,103HW	SA	1
4	2		DB90-09442A	ASSY PLATE-CONTROL; 360CST MAIN	SA	1
5	2		DB61-06591A	PLATE CONTROL-UP; AC145KN4PBH1,GI-SGCC,T0	SA	1
6	2		DB31-00578D	MOTOR BLOWER; FMC6531SSK,65W,DC310V	SA	1
7	2		DB60-00406A	FASTENER-NUT FLANGE; SWRCH10A	SA	1
8	2		DB60-00427A	FASTENER-NUT WASHER; FASTENER-NUT WASHER,	SA	3
9	2	A1151	DB94-03093A	ASSY FAN TURBO; NS0714DXEA	SA	1
10	2	A1062	DB96-22358A	ASSY EVAP-UNIT; AM060KN4PBH1	SA	1

No.	Lvl.	Loc.	Material Code	Description & Specification	SNA	Qty.
10-1	3		DB96-22155D	ASSY TUBE EVAP OUT; AM060KN4PBH1,DVM 360C	SNA	1
10-1-1	4		DB60-30010C	FASTENER-NUT FLARE; BRASS	SA	1
10-1-2	4		DB63-00360C	COVER-FLARE; SH12ACB,PA,1/2"	SNA	1
10-2	3	A2355	DB96-22332B	ASSY TUBE EVAP IN; AM060KN4PBH1	SNA	1
10-2-1	4		DB62-11473A	VALVE GEAR EXPAN; BRASS,3.2,2000,500	SA	1
10-2-2	4	T0128	DB62-00541A	TUBE-FILTER; AXD-1414,C1220T-H,T1,OD19.05	SNA	1
10-2-3	4		DB60-30010A	FASTENER-NUT FLARE; BRASS	SA	1
11	2		DB61-04518A	HOLDER-EVAP; Global 4W-CST,STS430,T0.6	SA	2
12	2		DB61-06562A	CASE-PARTITION; HIPS,T1.6,NATURAL	SA	1
13	2	S0242	DB81-00635A	SPRING ETC-SENSOR; DVM-SYSTEM,STS304,R2.5	SA	2
14	2	A0646	DB93-07990A	ASSY CONNECTOR WIRE-EARTH; 1,1015,18,YEL/	SA	1
15	2		DB95-05011D	ASSY THERMISTOR IN; 10Kohm 3%,103HW,7P,4	SA	1
16	2	A0916	DB94-02739G	ASSY DRAIN-HOSE INSTALL; GLOBAL 4WAY	SA	1
16-1	3		DB94-02719B	ASSY DRAIN-HOSE; 250,NS1004PXEA,CLAMP TYP	SA	1
16-1-1	4		DB90-06130A	ASSY HOLDER-CLAMP; NS1004PXEA	SA	1
17	2		DB60-00150A	SCREW-SPECIAL; HWH,M4,L26,ZPC(WHT),SWRCH1	SA	2
18	2		DB90-09385A	ASSY COVER-PIPE; 360CST	SA	1
19	2		DB94-06097A	ASSY TRAY DRAIN-PUMP; AC145KN4PBH1	SNA	1
19-1	3		DB31-00649B	PUMP DRAIN; 400,PBT,1200,UL224,550,PVC,VW	SA	1
19-2	3		DB95-04462B	SWITCH FLOAT; 700.5mm,2.5,1200mm,SMH250	SA	1
20	2		DB90-09398B	ASSY COVER-INLET; 360CST EXP	SA	1

# 1. AM009KN4DCH/AA Ver. 01 (manufactured 01/2017 or later)

## Exploded View



## Parts List

No.	Lvl.	Loc.	Material Code	Description & Specification	SNA	Qty.
1	2	A2676	DB90-09381A	ASSY CABI BODY; 360CST SML	SA	1
1-1	3		DB61-06571A	BODY; HIPS,T2.0,BLACK,S	SA	1
1-2	3	P0229	DB61-06585A	PLATE-HANGER; PLATE-HANGER,GI-SGCC,T1.6	SA	4
1-3	3	A2803	DB90-05821A	ASSY BRACKET MOTOR; Global 4W-CST	SA	1
1-4	3		DB94-06051A	ASSY HOSE DRAIN; AC145KN4PBH1	SA	1
1-4-1	4	V0020	DB62-09665A	VALVE CHECK; PPO,BLACK,1-1,8	SA	1
2	2		DB90-09387B	ASSY FRAME OUTLET; 360 CST	SA	1
2-1	3		DB31-00674A	MOTOR BLDC FAN; Booster Fan motor,2800,12	SA	3
2-2	3		DB61-06616A	CASE PCB-SUB; PC	SA	1
2-3	3		DB90-09379A	ASSY COVER-UP; 360CST	SA	1
2-4	3		DB90-09396A	ASSY FRAME OUTLET-UP; 360CST LRG	SA	1
2-5	3		DB90-09397A	ASSY COVER-OUTLET; 360CST	SA	1
2-6	3		DB90-09463A	ASSY FRAME OUTLET-LOW; 360CST	SA	1
2-7	3	A0694	DB92-02805A	ASSY PCB SUB; RECEIVER,DVM NASA_MASTER_N,	SA	1
2-8	3	A0882	DB93-15822A	ASSY DISPLAY; 360CST	SA	1

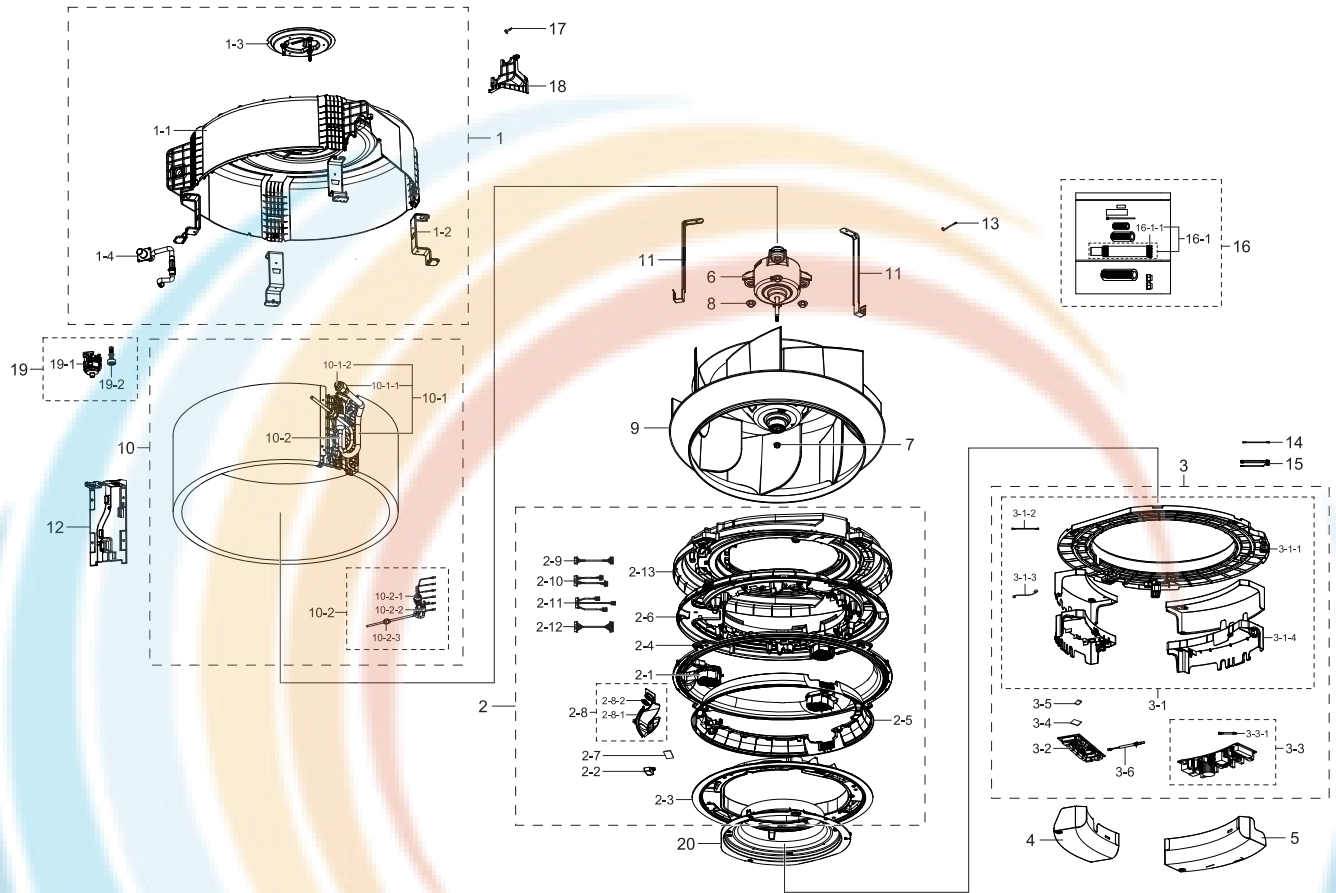
## Exploded Views and Parts List

No.	Lvl.	Loc.	Material Code	Description & Specification	SNA	Qty.
2-8-1	4		DB64-03204A	WINDOW DISPLAY-B; WINDOW DISPLAY-B,PMMA,T	SA	1
2-8-2	4		DB92-03855A	ASSY PCB DISPLAY; DISPLAY PBA,AC9000K,97*	SA	1
2-9	3		DB93-06159B	ASSY CONNECTOR WIRE-DISPLAY; 10,2095,26,B	SA	1
2-10	3		DB93-16336A	ASSY CONNECTOR WIRE-DC SIGNAL; 10,2095,26	SA	1
2-11	3		DB93-15861B	ASSY CONNECTOR WIRE-DC SIGNAL; 12,2095,26	SA	1
2-12	3	A2303	DB94-06052A	ASSY TRAY DRAIN; AC145KN4PBH1	SA	1
3	2		DB92-04035B	ASSY KIT; INDOOR,360CST UNITED,DVM 360 CS	SNA	1
3-1	3		DB90-09386C	ASSY CASE CONTROL; 360CST	SA	1
3-1-1	4	C1140	DB63-03763A	COVER-BELL MOUTH; AC145KN4PBH1,HIPS,T2.0,	SA	1
3-1-2	4		DB61-06767A	PLATE CONTROL-LOW; AC145KN4PBH1,GI-SGCC,T	SNA	1
3-1-3	4		DB61-06768A	CASE CONTROL-IN; MPPE,T2.5,EBONY BLACK	SNA	1
3-1-4	4	A0646	DB93-08805B	ASSY CONNECTOR WIRE-EARTH; 1,1015,18,YEL/	SA	1
3-2	3	A2748	DB92-04034B	ASSY PCB MAIN; MAIN,360CST UNITED,260*108	SA	1
3-2-1	4		DB93-13688A	ASSY CONNECTOR WIRE-DC SIGNAL; 2,1007,24,	SA	1
3-2-2	4		DB94-06087A	ASSY HEAT SINK 1; POWER PBA,AC9000K,194*9	SNA	1
3-2-2-1	5		0205-000178	GREASE-SILICON; YG6111,WHITE, for assembl	SA	1
3-2-3	4		DB94-06486A	ASSY HEAT SINK 5; MAIN,360CST UNITED,260*	SNA	1
3-2-3-1	5		0205-000178	GREASE-SILICON; YG6111,WHITE, for assembl	SA	1
3-2-4	4		DB92-02793A	ASSY FUNCTION; COMM,DVM NASA_CST,Y	SA	1
3-2-5	4	A0694	DB92-04020A	ASSY PCB SUB; SUB,20*25,Indoor EEPROM,Yes	SA	1
3-3	3	A3189	DB95-05009A	ASSY THERMISTOR IN-ROOM; 10Kohm 3%,103HW	SA	1
4	2		DB61-06766A	PLATE CONTROL-UP; AC145KN4PBH1,GI-SGCC,T0	SA	1
5	2	A0916	DB94-02739G	ASSY DRAIN-HOSE INSTALL; GLOBAL 4WAY	SA	1
5-1	3		DB94-02719B	ASSY DRAIN-HOSE; 250,NS1004PXEA,CLAMP TYP	SA	1
5-1-1	4		DB90-06130A	ASSY HOLDER-CLAMP; NS1004PXEA	SA	1
6	2		DB31-00578E	MOTOR BLOWER; FMC6531SSL,65W,DC310V,NO FE	SA	1
7	2		DB60-00406A	FASTENER-NUT FLANGE; SWRCH10A	SA	1

No.	Lvl.	Loc.	Material Code	Description & Specification	SNA	Qty.
8	2		DB60-00427A	FASTENER-NUT WASHER; FASTENER-NUT WASHER,	SA	3
9	2	A1151	DB94-03093A	ASSY FAN TURBO; NS0714DXEA	SA	1
10	2	A1062	DB96-22358B	ASSY EVAP-UNIT; 4TVS0018B100NA	SA	1
10-1	3		DB96-22155D	ASSY TUBE EVAP OUT; AM060KN4PBH1,DVM 360C	SNA	1
10-1-1	4	N0027	DB60-30010C	FASTENER-NUT FLARE; BRASS	SA	1
10-1-2	4	C1284	DB63-00360C	COVER-FLARE; SH12ACB,PA,1/2"	SNA	1
10-2	3		DB96-22332D	ASSY TUBE EVAP-IN; 4TVS0018B100NA	SNA	1
10-2-1	4	N0027	DB60-30010A	FASTENER-NUT FLARE; BRASS	SA	1
10-2-2	4		DB62-11473B	VALVE GEAR EXPAN; 3.2,2000,1000	SA	1
11	2		DB61-04518A	HOLDER-EVAP; Global 4W-CST,STS430,T0.6	SA	2
12	2		DB61-06562A	CASE-PARTITION; HIPS,T1.6,NATURAL	SA	1
13	2	S0242	DB81-00635A	SPRING ETC-SENSOR; DVM-SYSTEM,STS304,R2.5	SA	2
14	2	A0646	DB93-07990B	ASSY CONNECTOR WIRE-EARTH; 1,1015,18,YEL/	SA	1
15	2		DB32-00239A	SENSOR TEMP; 103HW,360CST UNITED_EVA IN-O	SA	1
16	2		DB90-09385A	ASSY COVER-PIPE; 360CST	SA	1
17	2		DB94-06097B	ASSY TRAY DRAIN-PUMP; 360 CST	SNA	1
17-1	3		DB95-04462E	SWITCH FLOAT; 700.5mm,2.5,1600mm,SMH250	SA	1
17-2	3		DB31-00649G	PUMP DRAIN; 400,1200,1600	SA	1
18	2		DB60-00150A	SCREW-SPECIAL; HWH,M4,L26,ZPC(WHT),SWRCH1	SA	2
19	2		DB90-09398B	ASSY COVER-INLET; 360CST EXP	SA	1
20	3		DB61-05788A	BRACKET-CONDUIT; G-4WAY,MINI 4WAY,SGCC-M,	SA	1

# 1. AM012KN4DCH/AA (manufactured 12/2016 or earlier)

## Exploded View



## Parts List

No.	Lvl.	Loc.	Material Code	Description & Specification	SNA	Qty.
1	2	A2676	DB90-09381A	ASSY CABI BODY; 360CST SML	SA	1
1-1	3		DB61-06571A	BODY; HIPS,T2.0,BLACK,S	SA	1
1-2	3	P0229	DB61-06585A	PLATE-HANGER; PLATE-HANGER,GI-SGCC,T1.6	SA	4
1-3	3	A2803	DB90-05821A	ASSY BRACKET MOTOR; Global 4W-CST	SA	1
1-4	3		DB94-06051A	ASSY HOSE DRAIN; AC145KN4PBH1	SA	1
2	2		DB90-09387A	ASSY FRAME OUTLET; 360CST	SA	1
2-1	3		DB31-00674A	MOTOR BLDC FAN; Booster Fan motor,2800,12	SA	3
2-2	3		DB61-06616A	CASE PCB-SUB; PC	SA	1
2-3	3		DB90-09379A	ASSY COVER-UP; 360CST	SA	1
2-4	3		DB90-09396A	ASSY FRAME OUTLET-UP; 360CST LRG	SA	1
2-5	3		DB90-09397A	ASSY COVER-OUTLET; 360CST	SA	1
2-6	3		DB90-09463A	ASSY FRAME OUTLET-LOW; 360CST	SA	1
2-7	3	A0694	DB92-02805A	ASSY PCB SUB; RECEIVER,DVM NASA_MASTER_N,	SA	1

Exploded Views and Parts List

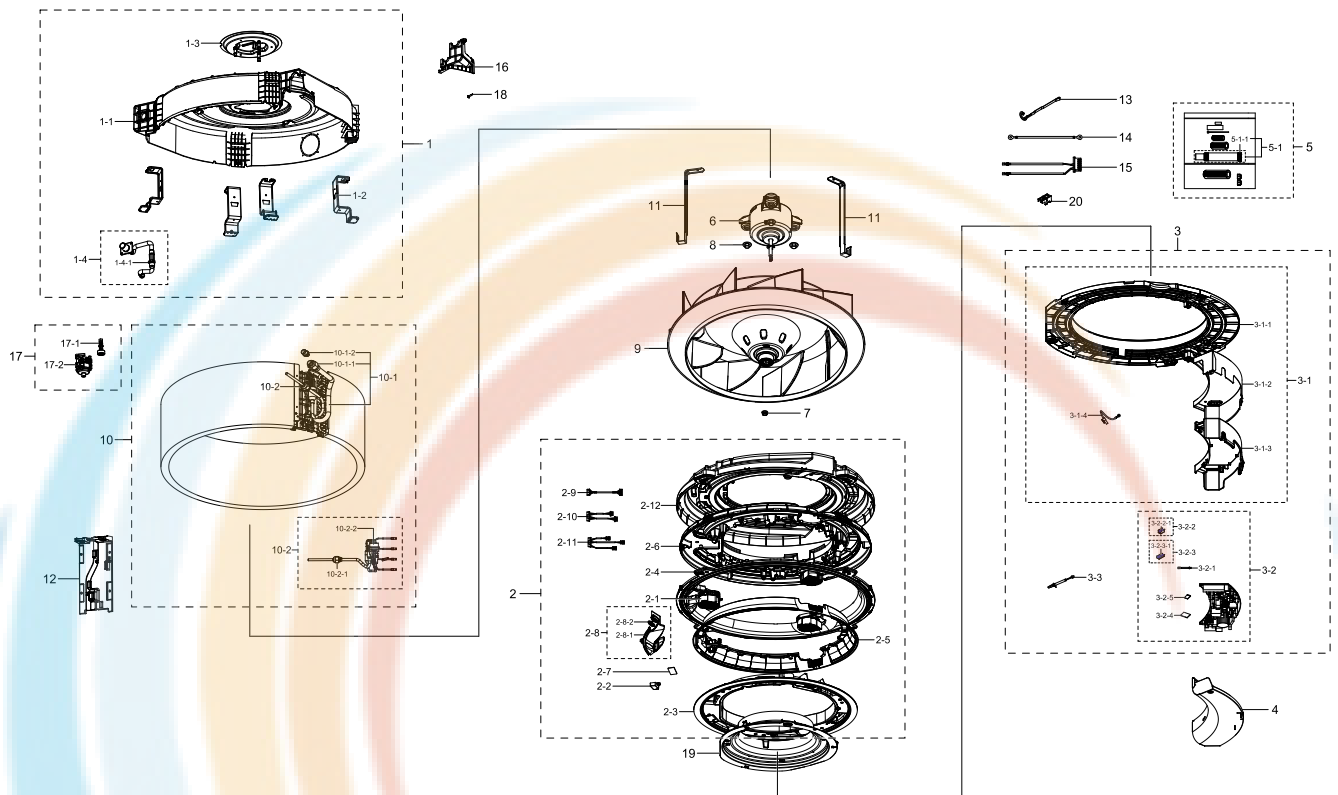
No.	Lvl.	Loc.	Material Code	Description & Specification	SNA	Qty.
2-8	3	A0882	DB93-15822A	ASSY DISPLAY; 360CST	SA	1
2-8-1	4		DB64-03204A	WINDOW DISPLAY-B; WINDOW DISPLAY-B,PMMA,T	SA	1
2-8-2	4		DB92-03855A	ASSY PCB DISPLAY; DISPLAY PBA,AC9000K,97*	SA	1
2-9	3		DB93-06159A	ASSY CONNECTOR WIRE-DISPLAY; 10,2095,26,B	SA	1
2-10	3		DB93-15860A	ASSY CONNECTOR WIRE-DC SIGNAL; 11,2095,24	SA	1
2-11	3		DB93-15861A	ASSY CONNECTOR WIRE-DC SIGNAL; 12,2095,26	SA	1
2-12	3		DB93-15862A	ASSY CONNECTOR WIRE-DC SIGNAL; 15,2095,26	SA	1
2-13	3	A2303	DB94-06052A	ASSY TRAY DRAIN; AC145KN4PBH1	SA	1
3	2		DB92-03857D	ASSY KIT; ASSY KIT,AC9000K,360 CST,DVM AS	SNA	1
3-1	3		DB90-09386B	ASSY CASE CONTROL; 360CST NORTH AMERICA	SA	1
3-1-1	4	C1140	DB63-03763A	COVER-BELL MOUTH; AC145KN4PBH1,HIPS,T2.0,	SA	1
3-1-2	4	A0646	DB93-07990A	ASSY CONNECTOR WIRE-EARTH; 1,1015,18,YEL/	SA	1
3-1-3	4	A0646	DB93-08805B	ASSY CONNECTOR WIRE-EARTH; 1,1015,18,YEL/	SA	1
3-1-4	4		DB90-09444B	ASSY CASE CONTROL-LOW; 360CST NORTH AMERI	SA	1
3-2	3	A2748	DB92-03856B	ASSY PCB MAIN; MAIN PBA,AM6000H,160*60.5,	SA	1
3-3	3		DB92-03854A	ASSY PCB POWER; POWER PBA,AC9000K,194*93,	SA	1
3-3-1	4		DB93-13688A	ASSY CONNECTOR WIRE-DC SIGNAL; 2,1007,24,	SA	1
3-4	3		DB92-02793A	ASSY FUNCTION; COMM,DVM NASA_CST,Y	SA	1
3-5	3		DB93-12483A	ASSY PCB SUB-EEPROM; SUB,DVMPLUS4 UP,20*2	SA	1
3-6	3	A3189	DB95-05009A	ASSY THERMISTOR IN-ROOM; 10Kohm 3%,103HW	SA	1
4	2		DB90-09442A	ASSY PLATE-CONTROL; 360CST MAIN	SA	1
5	2		DB61-06591A	PLATE CONTROL-UP; AC145KN4PBH1,GI-SGCC,T0	SA	1
6	2		DB31-00578D	MOTOR BLOWER; FMC6531SSK,65W,DC310V	SA	1
7	2		DB60-00406A	FASTENER-NUT FLANGE; SWRCH10A	SA	1
8	2		DB60-00427A	FASTENER-NUT WASHER; FASTENER-NUT WASHER,	SA	3
9	2	A1151	DB94-03093A	ASSY FAN TURBO; NS0714DXEA	SA	1
10	2	A1062	DB96-22358A	ASSY EVAP-UNIT; AM060KN4PBH1	SA	1



No.	Lvl.	Loc.	Material Code	Description & Specification	SNA	Qty.
10-1	3		DB96-22155D	ASSY TUBE EVAP OUT; AM060KN4PBH1,DVM 360C	SNA	1
10-1-1	4		DB60-30010C	FASTENER-NUT FLARE; BRASS	SA	1
10-1-2	4		DB63-00360C	COVER-FLARE; SH12ACB,PA,1/2"	SNA	1
10-2	3	A2355	DB96-22332B	ASSY TUBE EVAP IN; AM060KN4PBH1	SNA	1
10-2-1	4		DB62-11473A	VALVE GEAR EXPAN; BRASS,3.2,2000,500	SA	1
10-2-2	4	T0128	DB62-00541A	TUBE-FILTER; AXD-1414,C1220T-H,T1,OD19.05	SNA	1
10-2-3	4		DB60-30010A	FASTENER-NUT FLARE; BRASS	SA	1
11	2		DB61-04518A	HOLDER-EVAP; Global 4W-CST,STS430,T0.6	SA	2
12	2		DB61-06562A	CASE-PARTITION; HIPS,T1.6,NATURAL	SA	1
13	2	S0242	DB81-00635A	SPRING ETC-SENSOR; DVM-SYSTEM,STS304,R2.5	SA	2
14	2	A0646	DB93-07990A	ASSY CONNECTOR WIRE-EARTH; 1,1015,18,YEL/	SA	1
15	2		DB95-05011D	ASSY THERMISTOR IN; 10Kohm 3%,103HW,7P,4	SA	1
16	2	A0916	DB94-02739G	ASSY DRAIN-HOSE INSTALL; GLOBAL 4WAY	SA	1
16-1	3		DB94-02719B	ASSY DRAIN-HOSE; 250,NS1004PXEA,CLAMP TYP	SA	1
16-1-1	4		DB90-06130A	ASSY HOLDER-CLAMP; NS1004PXEA	SA	1
17	2		DB60-00150A	SCREW-SPECIAL; HWH,M4,L26,ZPC(WHT),SWRCH1	SA	2
18	2		DB90-09385A	ASSY COVER-PIPE; 360CST	SA	1
19	2		DB94-06097A	ASSY TRAY DRAIN-PUMP; AC145KN4PBH1	SNA	1
19-1	3		DB31-00649B	PUMP DRAIN; 400,PBT,1200,UL224,550,PVC,VW	SA	1
19-2	3		DB95-04462B	SWITCH FLOAT; 700.5mm,2.5,1200mm,SMH250	SA	1
20	2		DB90-09398B	ASSY COVER-INLET; 360CST EXP	SA	1

# 1. AM012KN4DCH/AA Ver. 01 (manufactured 01/2017 or later)

## Exploded View



## Parts List

No.	Lvl.	Loc.	Material Code	Description & Specification	SNA	Qty.
1	2	A2676	DB90-09381A	ASSY CABI BODY; 360CST SML	SA	1
1-1	3		DB61-06571A	BODY; HIPS,T2.0,BLACK,S	SA	1
1-2	3	P0229	DB61-06585A	PLATE-HANGER; PLATE-HANGER,GI-SGCC,T1.6	SA	4
1-3	3	A2803	DB90-05821A	ASSY BRACKET MOTOR; Global 4W-CST	SA	1
1-4	3		DB94-06051A	ASSY HOSE DRAIN; AC145KN4PBH1	SA	1
1-4-1	4	V0020	DB62-09665A	VALVE CHECK; NS1004PXEA,PPO,74.5,0.05~1MP	SA	1
2	2		DB90-09387B	ASSY FRAME OUTLET; 360 CST	SA	1
2-1	3		DB31-00674A	MOTOR BLDC FAN; Booster Fan motor,2800,12	SA	3
2-2	3		DB61-06616A	CASE PCB-SUB; PC	SA	1
2-3	3		DB90-09379A	ASSY COVER-UP; 360CST	SA	1
2-4	3		DB90-09396A	ASSY FRAME OUTLET-UP; 360CST LRG	SA	1
2-5	3		DB90-09397A	ASSY COVER-OUTLET; 360CST	SA	1
2-6	3		DB90-09463A	ASSY FRAME OUTLET-LOW; 360CST	SA	1
2-7	3	A0694	DB92-02805A	ASSY PCB SUB; RECEIVER,DVM NASA_MASTER_N,	SA	1
2-8	3	A0882	DB93-15822A	ASSY DISPLAY; 360CST	SA	1

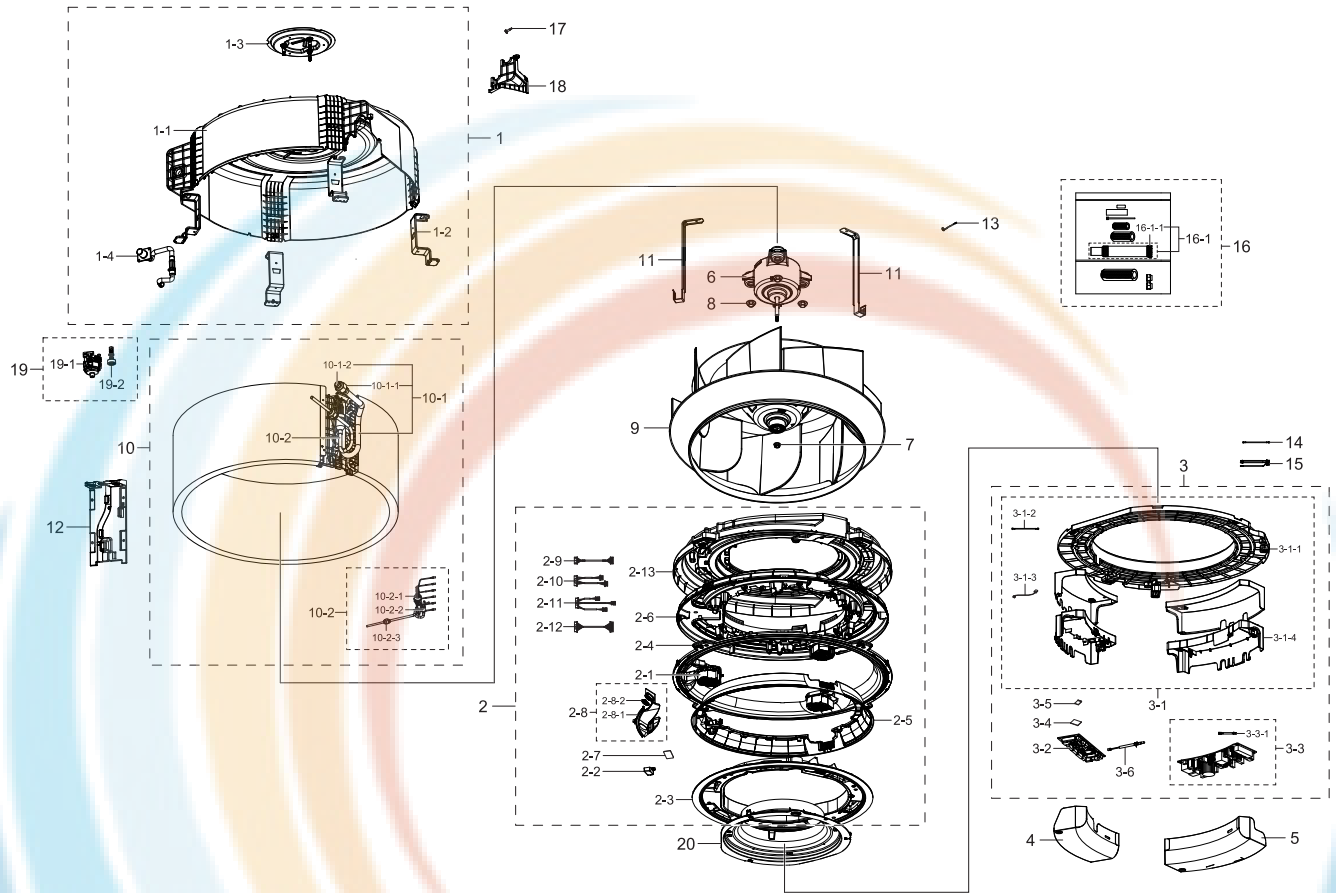
## Exploded Views and Parts List

No.	Lvl.	Loc.	Material Code	Description & Specification	SNA	Qty.
2-8-1	4		DB64-03204A	WINDOW DISPLAY-B; WINDOW DISPLAY-B,PMMA,T	SA	1
2-8-2	4		DB92-03855A	ASSY PCB DISPLAY; DISPLAY PBA,AC9000K,97*	SA	1
2-9	3		DB93-06159B	ASSY CONNECTOR WIRE-DISPLAY; 10,2095,26,B	SA	1
2-10	3		DB93-16336A	ASSY CONNECTOR WIRE-DC SIGNAL; 10,2095,26	SA	1
2-11	3		DB93-15861B	ASSY CONNECTOR WIRE-DC SIGNAL; 12,2095,26	SA	1
2-12	3	A2303	DB94-06052A	ASSY TRAY DRAIN; AC145KN4PBH1	SA	1
3	2		DB92-04035B	ASSY KIT; INDOOR,360CST UNITED,DVM 360 CS	SNA	1
3-1	3		DB90-09386C	ASSY CASE CONTROL; 360CST	SA	1
3-1-1	4	C1140	DB63-03763A	COVER-BELL MOUTH; AC145KN4PBH1,HIPS,T2.0,	SA	1
3-1-2	4		DB61-06767A	PLATE CONTROL-LOW; AC145KN4PBH1,GI-SGCC,T	SNA	1
3-1-3	4		DB61-06768A	CASE CONTROL-IN; MPPE,T2.5,EBONY BLACK	SNA	1
3-1-4	4	A0646	DB93-08805B	ASSY CONNECTOR WIRE-EARTH; 1,1015,18,YEL/	SA	1
3-2	3	A2748	DB92-04034B	ASSY PCB MAIN; MAIN,360CST UNITED,260*108	SA	1
3-2-1	4		DB93-13688A	ASSY CONNECTOR WIRE-DC SIGNAL; 2,1007,24,	SA	1
3-2-2	4		DB94-06087A	ASSY HEAT SINK 1; POWER PBA,AC9000K,194*9	SNA	1
3-2-2-1	5		0205-000178	GREASE-SILICON; YG6111,WHITE, for assembl	SA	1
3-2-3	4		DB94-06486A	ASSY HEAT SINK 5; MAIN,360CST UNITED,260*	SNA	1
3-2-3-1	5		0205-000178	GREASE-SILICON; YG6111,WHITE, for assembl	SA	1
3-2-4	4		DB92-02793A	ASSY FUNCTION; COMM,DVM NASA_CST,Y	SA	1
3-2-5	4	A0694	DB92-04020A	ASSY PCB SUB; SUB,20*25,Indoor EEPROM,Yes	SA	1
3-3	3	A3189	DB95-05009A	ASSY THERMISTOR IN-ROOM; 10Kohm 3%,103HW	SA	1
4	2		DB61-06766A	PLATE CONTROL-UP; AC145KN4PBH1,GI-SGCC,T0	SA	1
5	2	A0916	DB94-02739G	ASSY DRAIN-HOSE INSTALL; GLOBAL 4WAY	SA	1
5-1	3		DB94-02719B	ASSY DRAIN-HOSE; 250,NS1004PXEA,CLAMP TYP	SA	1
5-1-1	4		DB90-06130A	ASSY HOLDER-CLAMP; NS1004PXEA	SA	1
6	2		DB31-00578E	MOTOR BLOWER; FMC6531SSL,65W,DC310V,NO FE	SA	1
7	2		DB60-00406A	FASTENER-NUT FLANGE; SWRCH10A	SA	1

No.	Lvl.	Loc.	Material Code	Description & Specification	SNA	Qty.
8	2		DB60-00427A	FASTENER-NUT WASHER; FASTENER-NUT WASHER,	SA	3
9	2	A1151	DB94-03093A	ASSY FAN TURBO; NS0714DXEA	SA	1
10	2	A1062	DB96-22358B	ASSY EVAP-UNIT; 4TVS0018B100NA	SA	1
10-1	3		DB96-22155D	ASSY TUBE EVAP OUT; AM060KN4PBH1,DVM 360C	SNA	1
10-1-1	4	N0027	DB60-30010C	FASTENER-NUT FLARE; BRASS	SA	1
10-1-2	4	C1284	DB63-00360C	COVER-FLARE; SH12ACB,PA,1/2"	SNA	1
10-2	3		DB96-22332D	ASSY TUBE EVAP-IN; 4TVS0018B100NA	SNA	1
10-2-1	4	N0027	DB60-30010A	FASTENER-NUT FLARE; BRASS	SA	1
10-2-2	4		DB62-11473B	VALVE GEAR EXPAN; 3.2,2000,1000	SA	1
11	2		DB61-04518A	HOLDER-EVAP; Global 4W-CST,STS430,T0.6	SA	2
12	2		DB61-06562A	CASE-PARTITION; HIPS,T1.6,NATURAL	SA	1
13	2	S0242	DB81-00635A	SPRING ETC-SENSOR; DVM-SYSTEM,STS304,R2.5	SA	2
14	2	A0646	DB93-07990B	ASSY CONNECTOR WIRE-EARTH; 1,1015,18,YEL/	SA	1
15	2		DB32-00239A	SENSOR TEMP; 103HW,360CST UNITED_EVA IN-O	SA	1
16	2		DB90-09385A	ASSY COVER-PIPE; 360CST	SA	1
17	2		DB94-06097B	ASSY TRAY DRAIN-PUMP; 360 CST	SNA	1
17-1	3		DB95-04462E	SWITCH FLOAT; 700.5mm,2.5,1600mm,SMH250	SA	1
17-2	3		DB31-00649G	PUMP DRAIN; 400,1200,1600	SA	1
18	2		DB60-00150A	SCREW-SPECIAL; HWH,M4,L26,ZPC(WHT),SWRCH1	SA	2
19	2		DB90-09398B	ASSY COVER-INLET; 360CST EXP	SA	1
20	3		DB61-05788A	BRACKET-CONDUIT; G-4WAY,MINI 4WAY,SGCC-M,	SA	1

# 1. AM018KN4DCH/AA (manufactured 12/2016 or earlier)

## Exploded View



## Parts List

No.	Lvl.	Loc.	Material Code	Description & Specification	SNA	Qty.
1	2	A2676	DB90-09381A	ASSY CABI BODY; 360CST SML	SA	1
1-1	3		DB61-06571A	BODY; HIPS,T2.0,BLACK,S	SA	1
1-2	3	P0229	DB61-06585A	PLATE-HANGER; PLATE-HANGER,GI-SGCC,T1.6	SA	4
1-3	3	A2803	DB90-05821A	ASSY BRACKET MOTOR; Global 4W-CST	SA	1
1-4	3		DB94-06051A	ASSY HOSE DRAIN; AC145KN4PBH1	SA	1
2	2		DB90-09387A	ASSY FRAME OUTLET; 360CST	SA	1
2-1	3		DB31-00674A	MOTOR BLDC FAN; Booster Fan motor,2800,12	SA	3
2-2	3		DB61-06616A	CASE PCB-SUB; PC	SA	1
2-3	3		DB90-09379A	ASSY COVER-UP; 360CST	SA	1
2-4	3		DB90-09396A	ASSY FRAME OUTLET-UP; 360CST LRG	SA	1
2-5	3		DB90-09397A	ASSY COVER-OUTLET; 360CST	SA	1
2-6	3		DB90-09463A	ASSY FRAME OUTLET-LOW; 360CST	SA	1
2-7	3	A0694	DB92-02805A	ASSY PCB SUB; RECEIVER,DVM NASA_MASTER_N,	SA	1

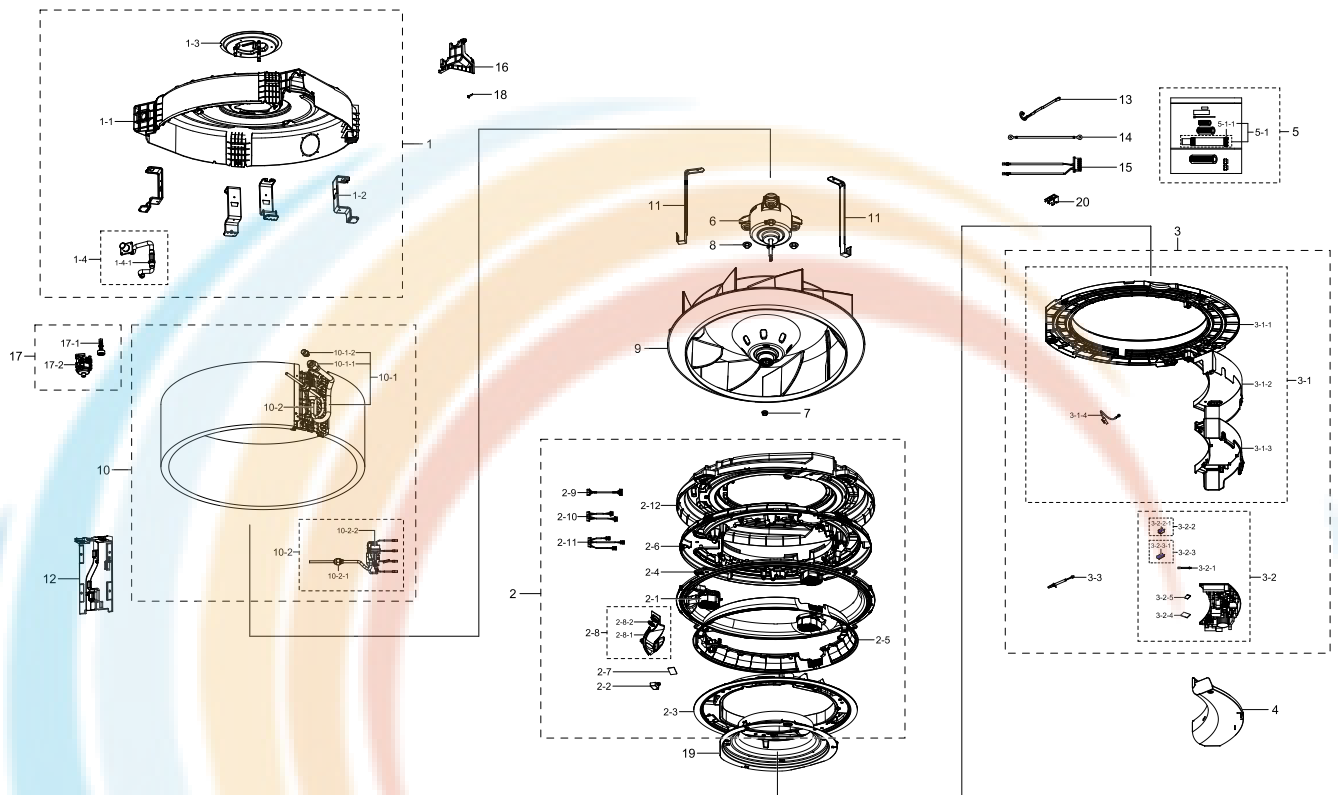
Exploded Views and Parts List

No.	Lvl.	Loc.	Material Code	Description & Specification	SNA	Qty.
2-8	3	A0882	DB93-15822A	ASSY DISPLAY; 360CST	SA	1
2-8-1	4		DB64-03204A	WINDOW DISPLAY-B; WINDOW DISPLAY-B,PMMA,T	SA	1
2-8-2	4		DB92-03855A	ASSY PCB DISPLAY; DISPLAY PBA,AC9000K,97*	SA	1
2-9	3		DB93-06159A	ASSY CONNECTOR WIRE-DISPLAY; 10,2095,26,B	SA	1
2-10	3		DB93-15860A	ASSY CONNECTOR WIRE-DC SIGNAL; 11,2095,24	SA	1
2-11	3		DB93-15861A	ASSY CONNECTOR WIRE-DC SIGNAL; 12,2095,26	SA	1
2-12	3		DB93-15862A	ASSY CONNECTOR WIRE-DC SIGNAL; 15,2095,26	SA	1
2-13	3	A2303	DB94-06052A	ASSY TRAY DRAIN; AC145KN4PBH1	SA	1
3	2		DB92-03857D	ASSY KIT; ASSY KIT,AC9000K,360 CST,DVM AS	SNA	1
3-1	3		DB90-09386B	ASSY CASE CONTROL; 360CST NORTH AMERICA	SA	1
3-1-1	4	C1140	DB63-03763A	COVER-BELL MOUTH; AC145KN4PBH1,HIPS,T2.0,	SA	1
3-1-2	4	A0646	DB93-07990A	ASSY CONNECTOR WIRE-EARTH; 1,1015,18,YEL/	SA	1
3-1-3	4	A0646	DB93-08805B	ASSY CONNECTOR WIRE-EARTH; 1,1015,18,YEL/	SA	1
3-1-4	4		DB90-09444B	ASSY CASE CONTROL-LOW; 360CST NORTH AMERI	SA	1
3-2	3	A2748	DB92-03856B	ASSY PCB MAIN; MAIN PBA,AM6000H,160*60.5,	SA	1
3-3	3		DB92-03854A	ASSY PCB POWER; POWER PBA,AC9000K,194*93,	SA	1
3-3-1	4		DB93-13688A	ASSY CONNECTOR WIRE-DC SIGNAL; 2,1007,24,	SA	1
3-4	3		DB92-02793A	ASSY FUNCTION; COMM,DVM NASA_CST,Y	SA	1
3-5	3		DB93-12483A	ASSY PCB SUB-EEPROM; SUB,DVMPLUS4 UP,20*2	SA	1
3-6	3	A3189	DB95-05009A	ASSY THERMISTOR IN-ROOM; 10Kohm 3%,103HW	SA	1
4	2		DB90-09442A	ASSY PLATE-CONTROL; 360CST MAIN	SA	1
5	2		DB61-06591A	PLATE CONTROL-UP; AC145KN4PBH1,GI-SGCC,T0	SA	1
6	2		DB31-00578D	MOTOR BLOWER; FMC6531SSK,65W,DC310V	SA	1
7	2		DB60-00406A	FASTENER-NUT FLANGE; SWRCH10A	SA	1
8	2		DB60-00427A	FASTENER-NUT WASHER; FASTENER-NUT WASHER,	SA	3
9	2	A1151	DB94-03093A	ASSY FAN TURBO; NS0714DXEA	SA	1
10	2	A1062	DB96-22358A	ASSY EVAP-UNIT; AM060KN4PBH1	SA	1

No.	Lvl.	Loc.	Material Code	Description & Specification	SNA	Qty.
10-1	3		DB96-22155D	ASSY TUBE EVAP OUT; AM060KN4PBH1,DVM 360C	SNA	1
10-1-1	4		DB60-30010C	FASTENER-NUT FLARE; BRASS	SA	1
10-1-2	4		DB63-00360C	COVER-FLARE; SH12ACB,PA,1/2"	SNA	1
10-2	3	A2355	DB96-22332B	ASSY TUBE EVAP IN; AM060KN4PBH1	SNA	1
10-2-1	4		DB62-11473A	VALVE GEAR EXPAN; BRASS,3.2,2000,500	SA	1
10-2-2	4	T0128	DB62-00541A	TUBE-FILTER; AXD-1414,C1220T-H,T1,OD19.05	SNA	1
10-2-3	4		DB60-30010A	FASTENER-NUT FLARE; BRASS	SA	1
11	2		DB61-04518A	HOLDER-EVAP; Global 4W-CST,STS430,T0.6	SA	2
12	2		DB61-06562A	CASE-PARTITION; HIPS,T1.6,NATURAL	SA	1
13	2	S0242	DB81-00635A	SPRING ETC-SENSOR; DVM-SYSTEM,STS304,R2.5	SA	2
14	2	A0646	DB93-07990A	ASSY CONNECTOR WIRE-EARTH; 1,1015,18,YEL/	SA	1
15	2		DB95-05011D	ASSY THERMISTOR IN; 10Kohm 3%,103HW,7P,4	SA	1
16	2	A0916	DB94-02739G	ASSY DRAIN-HOSE INSTALL; GLOBAL 4WAY	SA	1
16-1	3		DB94-02719B	ASSY DRAIN-HOSE; 250,NS1004PXEA,CLAMP TYP	SA	1
16-1-1	4		DB90-06130A	ASSY HOLDER-CLAMP; NS1004PXEA	SA	1
17	2		DB60-00150A	SCREW-SPECIAL; HWH,M4,L26,ZPC(WHT),SWRCH1	SA	2
18	2		DB90-09385A	ASSY COVER-PIPE; 360CST	SA	1
19	2		DB94-06097A	ASSY TRAY DRAIN-PUMP; AC145KN4PBH1	SNA	1
19-1	3		DB31-00649B	PUMP DRAIN; 400,PBT,1200,UL224,550,PVC,VW	SA	1
19-2	3		DB95-04462B	SWITCH FLOAT; 700.5mm,2.5,1200mm,SMH250	SA	1
20	2		DB90-09398B	ASSY COVER-INLET; 360CST EXP	SA	1

# 1. AM018KN4DCH/AA Ver. 01 (manufactured 01/2017 or later)

## Exploded View



## Parts List

No.	Lvl.	Loc.	Material Code	Description & Specification	SNA	Qty.
1	2	A2676	DB90-09381A	ASSY CABI BODY; 360CST SML	SA	1
1-1	3		DB61-06571A	BODY; HIPS,T2.0,BLACK,S	SA	1
1-2	3	P0229	DB61-06585A	PLATE-HANGER; PLATE-HANGER,GI-SGCC,T1.6	SA	4
1-3	3	A2803	DB90-05821A	ASSY BRACKET MOTOR; Global 4W-CST	SA	1
1-4	3		DB94-06051A	ASSY HOSE DRAIN; AC145KN4PBH1	SA	1
1-4-1	4	V0020	DB62-09665A	VALVE CHECK; PPO,BLACK,1-1,8	SA	1
2	2		DB90-09387B	ASSY FRAME OUTLET; 360 CST	SA	1
2-1	3		DB31-00674A	MOTOR BLDC FAN; Booster Fan motor,2800,12	SA	3
2-2	3		DB61-06616A	CASE PCB-SUB; PC	SA	1
2-3	3		DB90-09379A	ASSY COVER-UP; 360CST	SA	1
2-4	3		DB90-09396A	ASSY FRAME OUTLET-UP; 360CST LRG	SA	1
2-5	3		DB90-09397A	ASSY COVER-OUTLET; 360CST	SA	1
2-6	3		DB90-09463A	ASSY FRAME OUTLET-LOW; 360CST	SA	1
2-7	3	A0694	DB92-02805A	ASSY PCB SUB; RECEIVER,DVM NASA_MASTER_N,	SA	1
2-8	3	A0882	DB93-15822A	ASSY DISPLAY; 360CST	SA	1



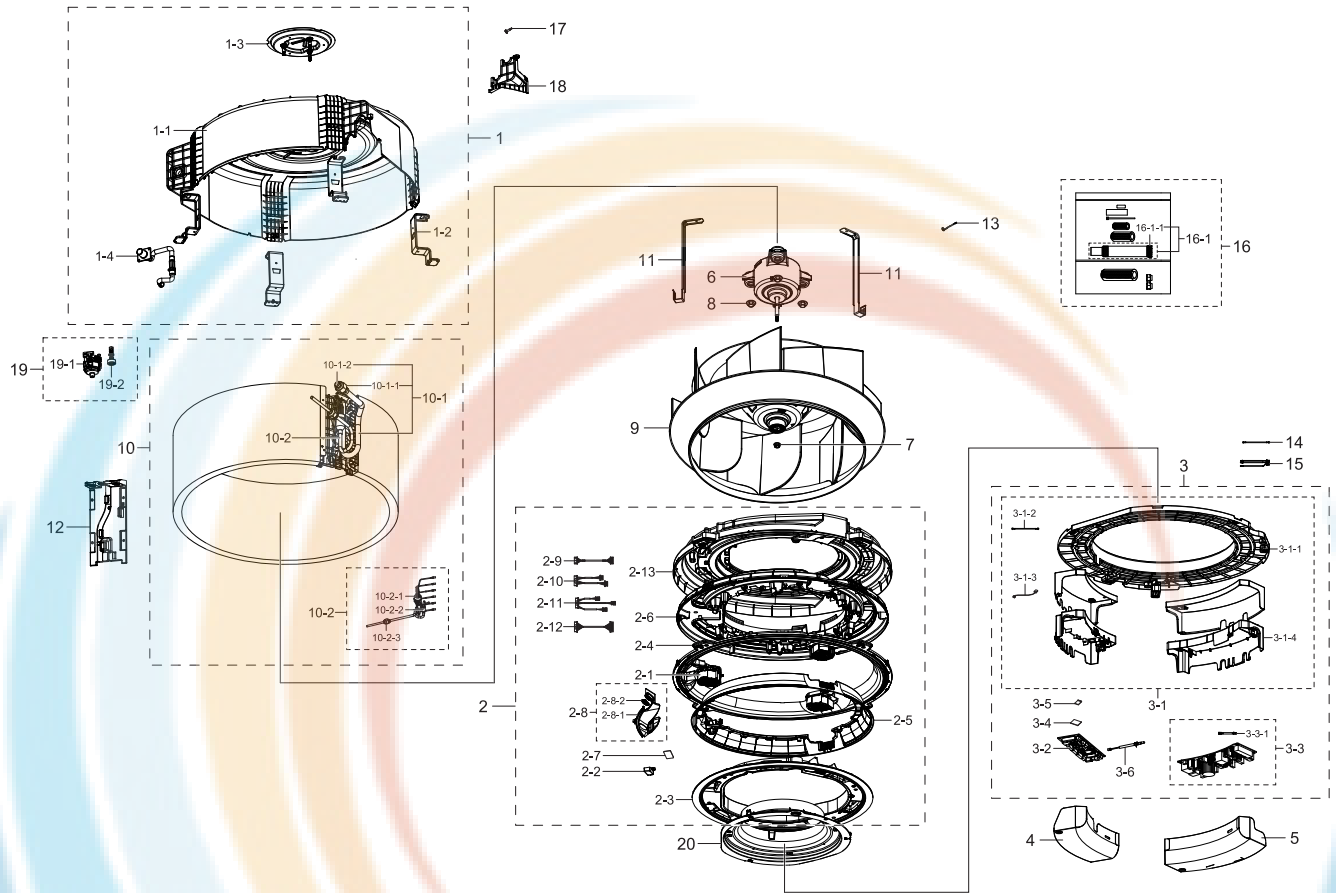
## Exploded Views and Parts List

No.	Lvl.	Loc.	Material Code	Description & Specification	SNA	Qty.
2-8-1	4		DB64-03204A	WINDOW DISPLAY-B; WINDOW DISPLAY-B,PMMA,T	SA	1
2-8-2	4		DB92-03855A	ASSY PCB DISPLAY; DISPLAY PBA,AC9000K,97*	SA	1
2-9	3		DB93-06159B	ASSY CONNECTOR WIRE-DISPLAY; 10,2095,26,B	SA	1
2-10	3		DB93-16336A	ASSY CONNECTOR WIRE-DC SIGNAL; 10,2095,26	SA	1
2-11	3		DB93-15861B	ASSY CONNECTOR WIRE-DC SIGNAL; 12,2095,26	SA	1
2-12	3	A2303	DB94-06052A	ASSY TRAY DRAIN; AC145KN4PBH1	SA	1
3	2		DB92-04035B	ASSY KIT; INDOOR,360CST UNITED,DVM 360 CS	SNA	1
3-1	3		DB90-09386C	ASSY CASE CONTROL; 360CST	SA	1
3-1-1	4	C1140	DB63-03763A	COVER-BELL MOUTH; AC145KN4PBH1,HIPS,T2.0,	SA	1
3-1-2	4		DB61-06767A	PLATE CONTROL-LOW; AC145KN4PBH1,GI-SGCC,T	SNA	1
3-1-3	4		DB61-06768A	CASE CONTROL-IN; MPPE,T2.5,EBONY BLACK	SNA	1
3-1-4	4	A0646	DB93-08805B	ASSY CONNECTOR WIRE-EARTH; 1,1015,18,YEL/	SA	1
3-2	3	A2748	DB92-04034B	ASSY PCB MAIN; MAIN,360CST UNITED,260*108	SA	1
3-2-1	4		DB93-13688A	ASSY CONNECTOR WIRE-DC SIGNAL; 2,1007,24,	SA	1
3-2-2	4		DB94-06087A	ASSY HEAT SINK 1; POWER PBA,AC9000K,194*9	SNA	1
3-2-2-1	5		0205-000178	GREASE-SILICON; YG6111,WHITE, for assembl	SA	1
3-2-3	4		DB94-06486A	ASSY HEAT SINK 5; MAIN,360CST UNITED,260*	SNA	1
3-2-3-1	5		0205-000178	GREASE-SILICON; YG6111,WHITE, for assembl	SA	1
3-2-4	4		DB92-02793A	ASSY FUNCTION; COMM,DVM NASA_CST,Y	SA	1
3-2-5	4	A0694	DB92-04020A	ASSY PCB SUB; SUB,20*25,Indoor EEPROM,Yes	SA	1
3-3	3	A3189	DB95-05009A	ASSY THERMISTOR IN-ROOM; 10Kohm 3%,103HW	SA	1
4	2		DB61-06766A	PLATE CONTROL-UP; AC145KN4PBH1,GI-SGCC,T0	SA	1
5	2	A0916	DB94-02739G	ASSY DRAIN-HOSE INSTALL; GLOBAL 4WAY	SA	1
5-1	3		DB94-02719B	ASSY DRAIN-HOSE; 250,NS1004PXEA,CLAMP TYP	SA	1
5-1-1	4		DB90-06130A	ASSY HOLDER-CLAMP; NS1004PXEA	SA	1
6	2		DB31-00578E	MOTOR BLOWER; FMC6531SSL,65W,DC310V,NO FE	SA	1
7	2		DB60-00406A	FASTENER-NUT FLANGE; SWRCH10A	SA	1

No.	Lvl.	Loc.	Material Code	Description & Specification	SNA	Qty.
8	2		DB60-00427A	FASTENER-NUT WASHER; FASTENER-NUT WASHER,	SA	3
9	2	A1151	DB94-03093A	ASSY FAN TURBO; NS0714DXEA	SA	1
10	2	A1062	DB96-22358B	ASSY EVAP-UNIT; 4TVS0018B100NA	SA	1
10-1	3		DB96-22155D	ASSY TUBE EVAP OUT; AM060KN4PBH1,DVM 360C	SNA	1
10-1-1	4	N0027	DB60-30010C	FASTENER-NUT FLARE; BRASS	SA	1
10-1-2	4	C1284	DB63-00360C	COVER-FLARE; SH12ACB,PA,1/2"	SNA	1
10-2	3		DB96-22332D	ASSY TUBE EVAP-IN; 4TVS0018B100NA	SNA	1
10-2-1	4	N0027	DB60-30010A	FASTENER-NUT FLARE; BRASS	SA	1
10-2-2	4		DB62-11473B	VALVE GEAR EXPAN; 3.2,2000,1000	SA	1
11	2		DB61-04518A	HOLDER-EVAP; Global 4W-CST,STS430,T0.6	SA	2
12	2		DB61-06562A	CASE-PARTITION; HIPS,T1.6,NATURAL	SA	1
13	2	S0242	DB81-00635A	SPRING ETC-SENSOR; DVM-SYSTEM,STS304,R2.5	SA	2
14	2	A0646	DB93-07990B	ASSY CONNECTOR WIRE-EARTH; 1,1015,18,YEL/	SA	1
15	2		DB32-00239A	SENSOR TEMP; 103HW,360CST UNITED_EVA IN-O	SA	1
16	2		DB90-09385A	ASSY COVER-PIPE; 360CST	SA	1
17	2		DB94-06097B	ASSY TRAY DRAIN-PUMP; 360 CST	SNA	1
17-1	3		DB95-04462E	SWITCH FLOAT; 700.5mm,2.5,1600mm,SMH250	SA	1
17-2	3		DB31-00649G	PUMP DRAIN; 400,1200,1600	SA	1
18	2		DB60-00150A	SCREW-SPECIAL; HWH,M4,L26,ZPC(WHT),SWRCH1	SA	2
19	2		DB90-09398B	ASSY COVER-INLET; 360CST EXP	SA	1
20	3		DB61-05788A	BRACKET-CONDUIT; G-4WAY,MINI 4WAY,SGCC-M,	SA	1

# 1. AM024KN4DCH/AA (manufactured 12/2016 or earlier)

## Exploded View



## Parts List

No.	Lvl.	Loc.	Material Code	Description & Specification	SNA	Qty.
1	2	A2676	DB90-09381A	ASSY CABI BODY; 360CST SML	SA	1
1-1	3		DB61-06571A	BODY; HIPS,T2.0,BLACK,S	SA	1
1-2	3	P0229	DB61-06585A	PLATE-HANGER; PLATE-HANGER,GI-SGCC,T1.6	SA	4
1-3	3	A2803	DB90-05821A	ASSY BRACKET MOTOR; Global 4W-CST	SA	1
1-4	3		DB94-06051A	ASSY HOSE DRAIN; AC145KN4PBH1	SA	1
2	2		DB90-09387A	ASSY FRAME OUTLET; 360CST	SA	1
2-1	3		DB31-00674A	MOTOR BLDC FAN; Booster Fan motor,2800,12	SA	3
2-2	3		DB61-06616A	CASE PCB-SUB; PC	SA	1
2-3	3		DB90-09379A	ASSY COVER-UP; 360CST	SA	1
2-4	3		DB90-09396A	ASSY FRAME OUTLET-UP; 360CST LRG	SA	1
2-5	3		DB90-09397A	ASSY COVER-OUTLET; 360CST	SA	1
2-6	3		DB90-09463A	ASSY FRAME OUTLET-LOW; 360CST	SA	1
2-7	3	A0694	DB92-02805A	ASSY PCB SUB; RECEIVER,DVM NASA_MASTER_N,	SA	1

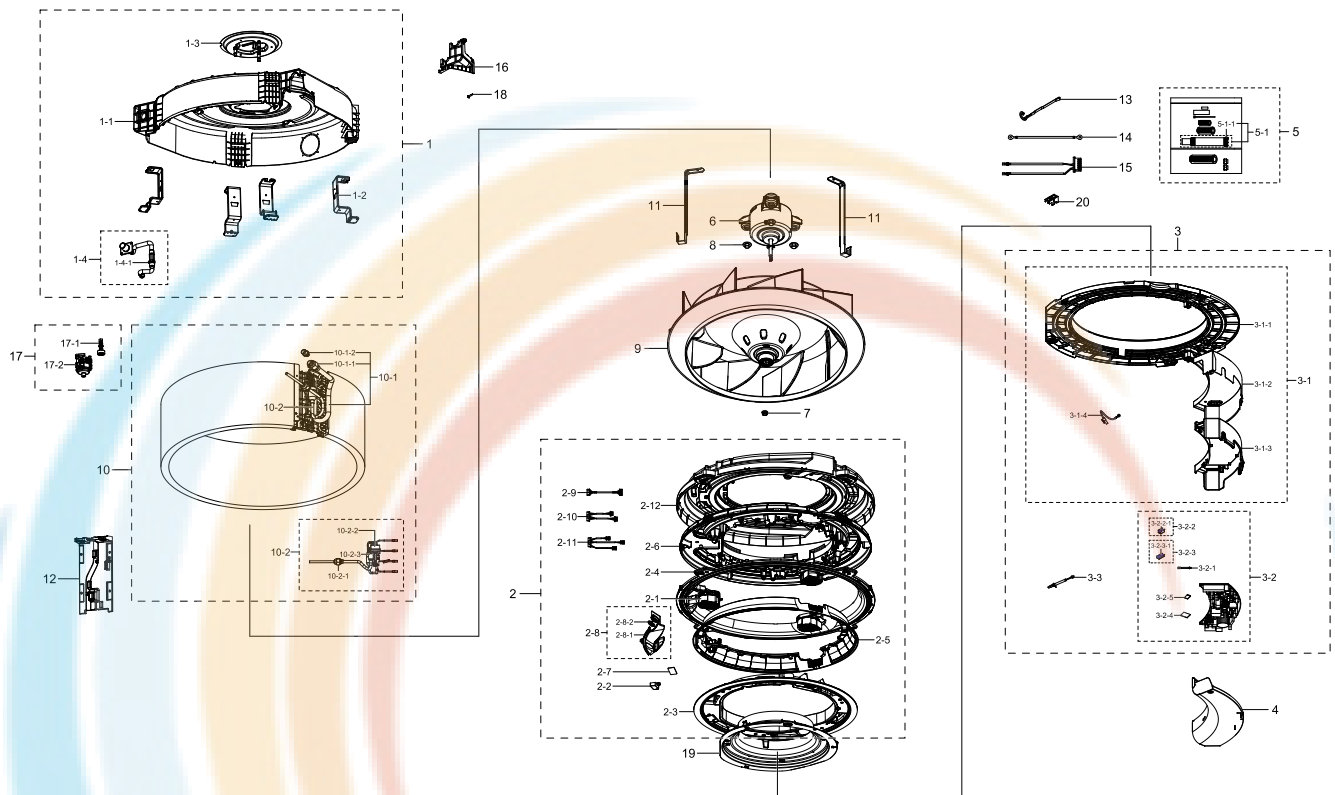
Exploded Views and Parts List

No.	Lvl.	Loc.	Material Code	Description & Specification	SNA	Qty.
2-8	3	A0882	DB93-15822A	ASSY DISPLAY; 360CST	SA	1
2-8-1	4		DB64-03204A	WINDOW DISPLAY-B; WINDOW DISPLAY-B,PMMA,T	SA	1
2-8-2	4		DB92-03855A	ASSY PCB DISPLAY; DISPLAY PBA,AC9000K,97*	SA	1
2-9	3		DB93-06159A	ASSY CONNECTOR WIRE-DISPLAY; 10,2095,26,B	SA	1
2-10	3		DB93-15860A	ASSY CONNECTOR WIRE-DC SIGNAL; 11,2095,24	SA	1
2-11	3		DB93-15861A	ASSY CONNECTOR WIRE-DC SIGNAL; 12,2095,26	SA	1
2-12	3		DB93-15862A	ASSY CONNECTOR WIRE-DC SIGNAL; 15,2095,26	SA	1
2-13	3	A2303	DB94-06052A	ASSY TRAY DRAIN; AC145KN4PBH1	SA	1
3	2		DB92-03857D	ASSY KIT; ASSY KIT,AC9000K,360 CST,DVM AS	SNA	1
3-1	3		DB90-09386B	ASSY CASE CONTROL; 360CST NORTH AMERICA	SA	1
3-1-1	4	C1140	DB63-03763A	COVER-BELL MOUTH; AC145KN4PBH1,HIPS,T2.0,	SA	1
3-1-2	4	A0646	DB93-07990A	ASSY CONNECTOR WIRE-EARTH; 1,1015,18,YEL/	SA	1
3-1-3	4	A0646	DB93-08805B	ASSY CONNECTOR WIRE-EARTH; 1,1015,18,YEL/	SA	1
3-1-4	4		DB90-09444B	ASSY CASE CONTROL-LOW; 360CST NORTH AMERI	SA	1
3-2	3	A2748	DB92-03856B	ASSY PCB MAIN; MAIN PBA,AM6000H,160*60.5,	SA	1
3-3	3		DB92-03854A	ASSY PCB POWER; POWER PBA,AC9000K,194*93,	SA	1
3-3-1	4		DB93-13688A	ASSY CONNECTOR WIRE-DC SIGNAL; 2,1007,24,	SA	1
3-4	3		DB92-02793A	ASSY FUNCTION; COMM,DVM NASA_CST,Y	SA	1
3-5	3		DB93-12483A	ASSY PCB SUB-EEPROM; SUB,DVMPLUS4 UP,20*2	SA	1
3-6	3	A3189	DB95-05009A	ASSY THERMISTOR IN-ROOM; 10Kohm 3%,103HW	SA	1
4	2		DB90-09442A	ASSY PLATE-CONTROL; 360CST MAIN	SA	1
5	2		DB61-06591A	PLATE CONTROL-UP; AC145KN4PBH1,GI-SGCC,T0	SA	1
6	2		DB31-00578D	MOTOR BLOWER; FMC6531SSK,65W,DC310V	SA	1
7	2		DB60-00406A	FASTENER-NUT FLANGE; SWRCH10A	SA	1
8	2		DB60-00427A	FASTENER-NUT WASHER; FASTENER-NUT WASHER,	SA	3
9	2	A1151	DB94-03093A	ASSY FAN TURBO; NS0714DXEA	SA	1
10	2	A1062	DB96-22359A	ASSY EVAP-UNIT; AM100KN4PBH1	SA	1

No.	Lvl.	Loc.	Material Code	Description & Specification	SNA	Qty.
10-1	3		DB96-22155C	ASSY TUBE EVAP OUT; AM100KN4PBH1,DVM 360C	SNA	1
10-1-1	4	N0027	DB60-30010D	FASTENER-NUT FLARE; BRASS	SA	1
10-1-2	4	C1284	DB63-00360D	COVER-FLARE; SH24AC6,PA,5/8"	SA	1
10-2	3	A2355	DB96-22332A	ASSY TUBE EVAP IN; AM100KN4PBH1	SNA	1
10-2-1	4		DB62-11473A	VALVE GEAR EXPAN; BRASS,3.2,2000,500	SA	1
10-2-2	4	T0128	DB62-00541E	TUBE-FILTER; MXD-18K214A,C1220T-H,T1,OD19	SA	1
10-2-3	4		DB60-30010B	FASTENER-NUT FLARE; BRASS	SA	1
11	2		DB61-04518A	HOLDER-EVAP; Global 4W-CST,STS430,T0.6	SA	2
12	2		DB61-06562A	CASE-PARTITION; HIPS,T1.6,NATURAL	SA	1
13	2	S0242	DB81-00635A	SPRING ETC-SENSOR; DVM-SYSTEM,STS304,R2.5	SA	2
14	2	A0646	DB93-07990A	ASSY CONNECTOR WIRE-EARTH; 1,1015,18,YEL/	SA	1
15	2		DB95-05011D	ASSY THERMISTOR IN; 10Kohm 3%,103HW,7P,4	SA	1
16	2	A0916	DB94-02739G	ASSY DRAIN-HOSE INSTALL; GLOBAL 4WAY	SA	1
16-1	3		DB94-02719B	ASSY DRAIN-HOSE; 250,NS1004PXEA,CLAMP TYP	SA	1
16-1-1	4		DB90-06130A	ASSY HOLDER-CLAMP; NS1004PXEA	SA	1
17	2		DB60-00150A	SCREW-SPECIAL; HWH,M4,L26,ZPC(WHT),SWRCH1	SA	2
18	2		DB90-09385A	ASSY COVER-PIPE; 360CST	SA	1
19	2		DB94-06097A	ASSY TRAY DRAIN-PUMP; AC145KN4PBH1	SNA	1
19-1	3		DB31-00649B	PUMP DRAIN; 400,PBT,1200,UL224,550,PVC,VW	SA	1
19-2	3		DB95-04462B	SWITCH FLOAT; 700.5mm,2.5,1200mm,SMH250	SA	1
20	2		DB90-09398B	ASSY COVER-INLET; 360CST EXP	SA	1

# 1. AM024KN4DCH/AA Ver. 01 (manufactured 01/2017 or later)

## Exploded View



## Parts List

No.	Lvl.	Loc.	Material Code	Description & Specification	SNA	Qty.
1	2	A2676	DB90-09381A	ASSY CABI BODY; 360CST SML	SA	1
1-1	3		DB61-06571A	BODY; HIPS,T2.0,BLACK,S	SA	1
1-2	3	P0229	DB61-06585A	PLATE-HANGER; PLATE-HANGER,GI-SGCC,T1.6	SA	4
1-3	3	A2803	DB90-05821A	ASSY BRACKET MOTOR; Global 4W-CST	SA	1
1-4	3		DB94-06051A	ASSY HOSE DRAIN; AC145KN4PBH1	SA	1
1-4-1	4	V0020	DB62-09665A	VALVE CHECK; NS1004PXEA,PPO,74.5,0.05~1MP	SA	1
2	2		DB90-09387B	ASSY FRAME OUTLET; 360 CST	SA	1
2-1	3		DB31-00674A	MOTOR BLDC FAN; Booster Fan motor,2800,12	SA	3
2-2	3		DB61-06616A	CASE PCB-SUB; PC	SA	1
2-3	3		DB90-09379A	ASSY COVER-UP; 360CST	SA	1
2-4	3		DB90-09396A	ASSY FRAME OUTLET-UP; 360CST LRG	SA	1
2-5	3		DB90-09397A	ASSY COVER-OUTLET; 360CST	SA	1
2-6	3		DB90-09463A	ASSY FRAME OUTLET-LOW; 360CST	SA	1
2-7	3	A0694	DB92-02805A	ASSY PCB SUB; RECEIVER,DVM NASA_MASTER_N,	SA	1
2-8	3	A0882	DB93-15822A	ASSY DISPLAY; 360CST	SA	1

## Exploded Views and Parts List

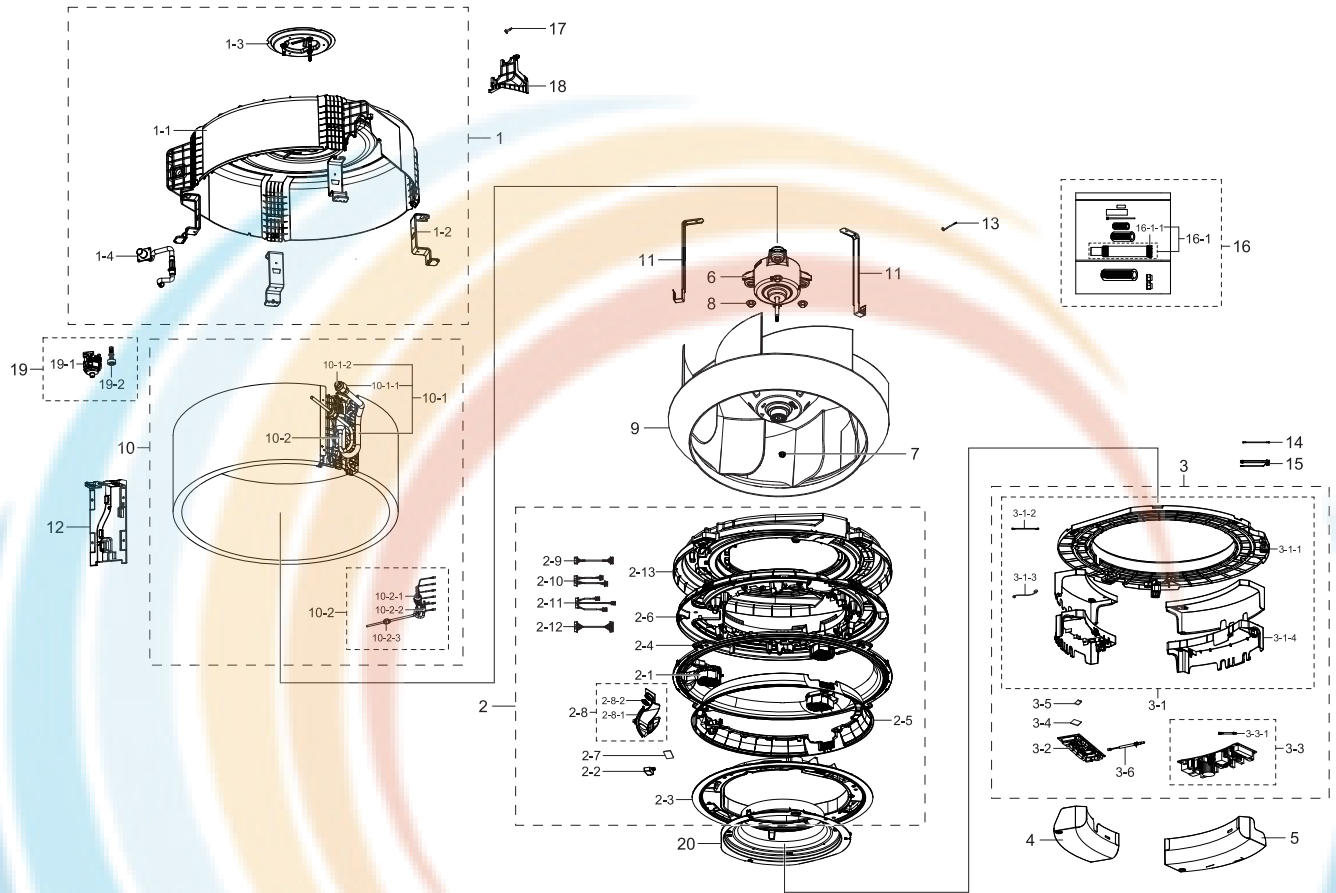
No.	Lvl.	Loc.	Material Code	Description & Specification	SNA	Qty.
2-8-1	4		DB64-03204A	WINDOW DISPLAY-B; WINDOW DISPLAY-B,PMMA,T	SA	1
2-8-2	4		DB92-03855A	ASSY PCB DISPLAY; DISPLAY PBA,AC9000K,97*	SA	1
2-9	3		DB93-06159B	ASSY CONNECTOR WIRE-DISPLAY; 10,2095,26,B	SA	1
2-10	3		DB93-16336A	ASSY CONNECTOR WIRE-DC SIGNAL; 10,2095,26	SA	1
2-11	3		DB93-15861B	ASSY CONNECTOR WIRE-DC SIGNAL; 12,2095,26	SA	1
2-12	3	A2303	DB94-06052A	ASSY TRAY DRAIN; AC145KN4PBH1	SA	1
3	2		DB92-04035B	ASSY KIT; INDOOR,360CST UNITED,DVM 360 CS	SNA	1
3-1	3		DB90-09386C	ASSY CASE CONTROL; 360CST	SA	1
3-1-1	4	C1140	DB63-03763A	COVER-BELL MOUTH; AC145KN4PBH1,HIPS,T2.0,	SA	1
3-1-2	4		DB61-06767A	PLATE CONTROL-LOW; AC145KN4PBH1,GI-SGCC,T	SNA	1
3-1-3	4		DB61-06768A	CASE CONTROL-IN; MPPE,T2.5,EBONY BLACK	SNA	1
3-1-4	4	A0646	DB93-08805B	ASSY CONNECTOR WIRE-EARTH; 1,1015,18,YEL/	SA	1
3-2	3	A2748	DB92-04034B	ASSY PCB MAIN; MAIN,360CST UNITED,260*108	SA	1
3-2-1	4		DB93-13688A	ASSY CONNECTOR WIRE-DC SIGNAL; 2,1007,24,	SA	1
3-2-2	4		DB94-06087A	ASSY HEAT SINK 1; POWER PBA,AC9000K,194*9	SNA	1
3-2-2-1	5		0205-000178	GREASE-SILICON; YG6111,WHITE, for assembl	SA	1
3-2-3	4		DB94-06486A	ASSY HEAT SINK 5; MAIN,360CST UNITED,260*	SNA	1
3-2-3-1	5		0205-000178	GREASE-SILICON; YG6111,WHITE, for assembl	SA	1
3-2-4	4		DB92-02793A	ASSY FUNCTION; COMM,DVM NASA_CST,Y	SA	1
3-2-5	4	A0694	DB92-04020A	ASSY PCB SUB; SUB,20*25,Indoor EEPROM,Yes	SA	1
3-3	3	A3189	DB95-05009A	ASSY THERMISTOR IN-ROOM; 10Kohm 3%,103HW	SA	1
4	2		DB61-06766A	PLATE CONTROL-UP; AC145KN4PBH1,GI-SGCC,T0	SA	1
5	2	A0916	DB94-02739G	ASSY DRAIN-HOSE INSTALL; GLOBAL 4WAY	SA	1
5-1	3		DB94-02719B	ASSY DRAIN-HOSE; 250,NS1004PXEA,CLAMP TYP	SA	1
5-1-1	4		DB90-06130A	ASSY HOLDER-CLAMP; NS1004PXEA	SA	1
6	2		DB31-00578E	MOTOR BLOWER; FMC6531SSL,65W,DC310V,NO FE	SA	1
7	2		DB60-00406A	FASTENER-NUT FLANGE; SWRCH10A	SA	1

No.	Lvl.	Loc.	Material Code	Description & Specification	SNA	Qty.
8	2		DB60-00427A	FASTENER-NUT WASHER; FASTENER-NUT WASHER,	SA	3
9	2	A1151	DB94-03093A	ASSY FAN TURBO; NS0714DXEA	SA	1
10	2	A1062	DB96-22359B	ASSY EVAP-UNIT; 4TVS0024B100NA	SA	1
10-1	3		DB96-22155C	ASSY TUBE EVAP OUT; AM100KN4PBH1,DVM 360C	SNA	1
10-1-1	4	N0027	DB60-30010D	FASTENER-NUT FLARE; BRASS	SA	1
10-1-2	4	C1284	DB63-00360D	COVER-FLARE; SH24AC6,PA,5/8"	SA	1
10-2	3		DB96-22332C	ASSY TUBE EVAP-IN; 4TVS0024B100NA	SNA	1
10-2-1	4	N0027	DB60-30010B	FASTENER-NUT FLARE; BRASS	SA	1
10-2-2	4		DB62-11473B	VALVE GEAR EXPAN; 3.2,2000,1000	SA	1
10-2-3	4	T0128	DB62-00541E	TUBE-FILTER; MXD-18K214A,C1220T-H,T1,OD19	SA	1
11	2		DB61-04518A	HOLDER-EVAP; Global 4W-CST,STS430,T0.6	SA	2
12	2		DB61-06562A	CASE-PARTITION; HIPS,T1.6,NATURAL	SA	1
13	2	S0242	DB81-00635A	SPRING ETC-SENSOR; DVM-SYSTEM,STS304,R2.5	SA	2
14	2	A0646	DB93-07990B	ASSY CONNECTOR WIRE-EARTH; 1,1015,18,YEL/	SA	1
15	2		DB32-00239A	SENSOR TEMP; 103HW,360CST UNITED_EVA IN-O	SA	1
16	2		DB90-09385A	ASSY COVER-PIPE; 360CST	SA	1
17	2		DB94-06097B	ASSY TRAY DRAIN-PUMP; 360 CST	SNA	1
17-1	3		DB95-04462E	SWITCH FLOAT; 700.5mm,2.5,1600mm,SMH250	SA	1
17-2	3		DB31-00649G	PUMP DRAIN; 400,1200,1600	SA	1
18	2		DB60-00150A	SCREW-SPECIAL; HWH,M4,L26,ZPC(WHT),SWRCH1	SA	2
19	2		DB90-09398B	ASSY COVER-INLET; 360CST EXP	SA	1
20	3		DB61-05788A	BRACKET-CONDUIT; G-4WAY,MINI 4WAY,SGCC-M,	SA	1



# 1. AM030KN4DCH/AA (manufactured 12/2016 or earlier)

## Exploded View



## Parts List

No.	Lvl.	Loc.	Material Code	Description & Specification	SNA	Qty.
1	2	A2676	DB90-09380A	ASSY CABI BODY; 360CST LRG	SA	1
1-1	3		DB61-06570A	BODY; HIPS,T2.0,BLACK,L	SA	1
1-2	3	P0229	DB61-06585A	PLATE-HANGER; PLATE-HANGER,GI-SGCC,T1.6	SA	4
1-3	3	A2803	DB90-05821A	ASSY BRACKET MOTOR; Global 4W-CST	SA	1
1-4	3		DB94-06051A	ASSY HOSE DRAIN; AC145KN4PBH1	SA	1
2	2		DB90-09387A	ASSY FRAME OUTLET; 360CST	SA	1
2-1	3		DB31-00674A	MOTOR BLDC FAN; Booster Fan motor,2800,12	SA	3
2-2	3		DB61-06616A	CASE PCB-SUB; PC	SA	1
2-3	3		DB90-09379A	ASSY COVER-UP; 360CST	SA	1
2-4	3		DB90-09396A	ASSY FRAME OUTLET-UP; 360CST LRG	SA	1
2-5	3		DB90-09397A	ASSY COVER-OUTLET; 360CST	SA	1
2-6	3		DB90-09463A	ASSY FRAME OUTLET-LOW; 360CST	SA	1
2-7	3	A0694	DB92-02805A	ASSY PCB SUB; RECEIVER,DVM NASA_MASTER_N,	SA	1

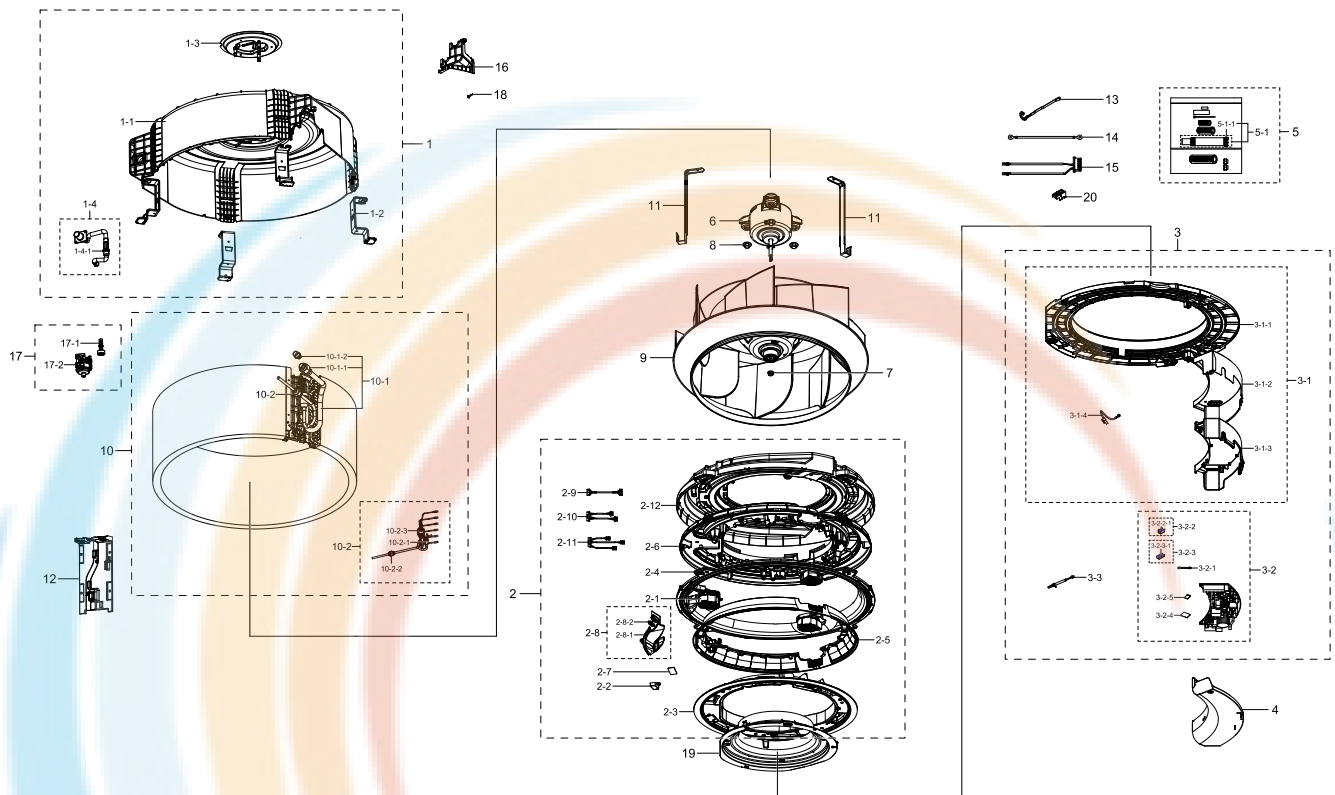
Exploded Views and Parts List

No.	Lvl.	Loc.	Material Code	Description & Specification	SNA	Qty.
2-8	3	A0882	DB93-15822A	ASSY DISPLAY; 360CST	SA	1
2-8-1	4		DB64-03204A	WINDOW DISPLAY-B; WINDOW DISPLAY-B,PMMA,T	SA	1
2-8-2	4		DB92-03855A	ASSY PCB DISPLAY; DISPLAY PBA,AC9000K,97*	SA	1
2-9	3		DB93-06159A	ASSY CONNECTOR WIRE-DISPLAY; 10,2095,26,B	SA	1
2-10	3		DB93-15860A	ASSY CONNECTOR WIRE-DC SIGNAL; 11,2095,24	SA	1
2-11	3		DB93-15861A	ASSY CONNECTOR WIRE-DC SIGNAL; 12,2095,26	SA	1
2-12	3		DB93-15862A	ASSY CONNECTOR WIRE-DC SIGNAL; 15,2095,26	SA	1
2-13	3	A2303	DB94-06052A	ASSY TRAY DRAIN; AC145KN4PBH1	SA	1
3	2		DB92-03857D	ASSY KIT; ASSY KIT,AC9000K,360 CST,DVM AS	SNA	1
3-1	3		DB90-09386B	ASSY CASE CONTROL; 360CST NORTH AMERICA	SA	1
3-1-1	4	C1140	DB63-03763A	COVER-BELL MOUTH; AC145KN4PBH1,HIPS,T2.0,	SA	1
3-1-2	4	A0646	DB93-07990A	ASSY CONNECTOR WIRE-EARTH; 1,1015,18,YEL/	SA	1
3-1-3	4	A0646	DB93-08805B	ASSY CONNECTOR WIRE-EARTH; 1,1015,18,YEL/	SA	1
3-1-4	4		DB90-09444B	ASSY CASE CONTROL-LOW; 360CST NORTH AMERI	SA	1
3-2	3	A2748	DB92-03856B	ASSY PCB MAIN; MAIN PBA,AM6000H,160*60.5,	SA	1
3-3	3		DB92-03854A	ASSY PCB POWER; POWER PBA,AC9000K,194*93,	SA	1
3-3-1	4		DB93-13688A	ASSY CONNECTOR WIRE-DC SIGNAL; 2,1007,24,	SA	1
3-4	3		DB92-02793A	ASSY FUNCTION; COMM,DVM NASA_CST,Y	SA	1
3-5	3		DB93-12483A	ASSY PCB SUB-EEPROM; SUB,DVMPLUS4 UP,20*2	SA	1
3-6	3	A3189	DB95-05009A	ASSY THERMISTOR IN-ROOM; 10Kohm 3%,103HW	SA	1
4	2		DB90-09442A	ASSY PLATE-CONTROL; 360CST MAIN	SA	1
5	2		DB61-06591A	PLATE CONTROL-UP; AC145KN4PBH1,GI-SGCC,T0	SA	1
6	2		DB31-00577C	MOTOR BLOWER; FMC9731SSD,97W,DC310V	SA	1
7	2		DB60-00406A	FASTENER-NUT FLANGE; SWRCH10A	SA	1
8	2		DB60-00427A	FASTENER-NUT WASHER; FASTENER-NUT WASHER,	SA	3
9	2		DB94-05978A	ASSY FAN TURBO; AC9000K	SA	1
10	2	A1062	DB96-22361A	ASSY EVAP-UNIT; AM130KN4PBH1	SA	1

No.	Lvl.	Loc.	Material Code	Description & Specification	SNA	Qty.
10-1	3		DB96-22154B	ASSY TUBE EVAP OUT; AM130KN4PBH1	SNA	1
10-1-1	4	N0027	DB60-30010D	FASTENER-NUT FLARE; BRASS	SA	1
10-1-2	4	C1284	DB63-00360D	COVER-FLARE; SH24AC6,PA,5/8"	SA	1
10-2	3	A2355	DB96-22323A	ASSY TUBE EVAP IN; AM130KN4PBH1	SNA	1
10-2-1	4		DB62-11474A	VALVE GEAR EXPAN; .,4.0,2000,500	SA	1
10-2-2	4	T0128	DB62-00541E	TUBE-FILTER; MXD-18K214A,C1220T-H,T1,OD19	SA	1
10-2-3	4		DB60-30010B	FASTENER-NUT FLARE; BRASS	SA	1
11	2		DB61-02669B	HOLDER-EVAP; 4WAY CST,STS430,T0.6,21.8,25	SA	2
12	2		DB61-06561A	CASE-PARTITION; HIPS,T1.6,NATURAL	SA	1
13	2	S0242	DB81-00635A	SPRING ETC-SENSOR; DVM-SYSTEM,STS304,R2.5	SA	2
14	2	A0646	DB93-07990A	ASSY CONNECTOR WIRE-EARTH; 1,1015,18,YEL/	SA	1
15	2		DB95-05011D	ASSY THERMISTOR IN; 10Kohm 3%,103HW,7P,4	SA	1
16	2	A0916	DB94-02739G	ASSY DRAIN-HOSE INSTALL; GLOBAL 4WAY	SA	1
16-1	3		DB94-02719B	ASSY DRAIN-HOSE; 250,NS1004PXEA,CLAMP TYP	SA	1
16-1-1	4		DB90-06130A	ASSY HOLDER-CLAMP; NS1004PXEA	SA	1
17	2		DB60-00150A	SCREW-SPECIAL; HWH,M4,L26,ZPC(WHT),SWRCH1	SA	2
18	2		DB90-09385A	ASSY COVER-PIPE; 360CST	SA	1
19	2		DB94-06097A	ASSY TRAY DRAIN-PUMP; AC145KN4PBH1	SNA	1
19-1	3		DB31-00649B	PUMP DRAIN; 400,PBT,1200,UL224,550,PVC,VW	SA	1
19-2	3		DB95-04462B	SWITCH FLOAT; 700.5mm,2.5,1200mm,SMH250	SA	1
20	2		DB90-09398B	ASSY COVER-INLET; 360CST EXP	SA	1

# 1. AM030KN4DCH/AA Ver. 01 (manufactured 01/2017 or later)

## Exploded View



## Parts List

No.	Lvl.	Loc.	Material Code	Description & Specification	SNA	Qty.
1	2	A2676	DB90-09380A	ASSY CABI BODY; 360CST LRG	SA	1
1-1	3		DB61-06570A	BODY; HIPS,T2.0,BLACK,L	SA	1
1-2	3	P0229	DB61-06585A	PLATE-HANGER; PLATE-HANGER,GI-SGCC,T1.6	SA	4
1-3	3	A2803	DB90-05821A	ASSY BRACKET MOTOR; Global 4W-CST	SA	1
1-4	3		DB94-06051A	ASSY HOSE DRAIN; AC145KN4PBH1	SA	1
1-4-1	4	V0020	DB62-09665A	VALVE CHECK; NS1004PXEA,PPO,74.5,0.05~1MP	SA	1
2	2		DB90-09387B	ASSY FRAME OUTLET; 360 CST	SA	1
2-1	3		DB31-00674A	MOTOR BLDC FAN; Booster Fan motor,2800,12	SA	3
2-2	3		DB61-06616A	CASE PCB-SUB; PC	SA	1
2-3	3		DB90-09379A	ASSY COVER-UP; 360CST	SA	1
2-4	3		DB90-09396A	ASSY FRAME OUTLET-UP; 360CST LRG	SA	1
2-5	3		DB90-09397A	ASSY COVER-OUTLET; 360CST	SA	1
2-6	3		DB90-09463A	ASSY FRAME OUTLET-LOW; 360CST	SA	1
2-7	3	A0694	DB92-02805A	ASSY PCB SUB; RECEIVER,DVM NASA_MASTER_N,	SA	1
2-8	3	A0882	DB93-15822A	ASSY DISPLAY; 360CST	SA	1

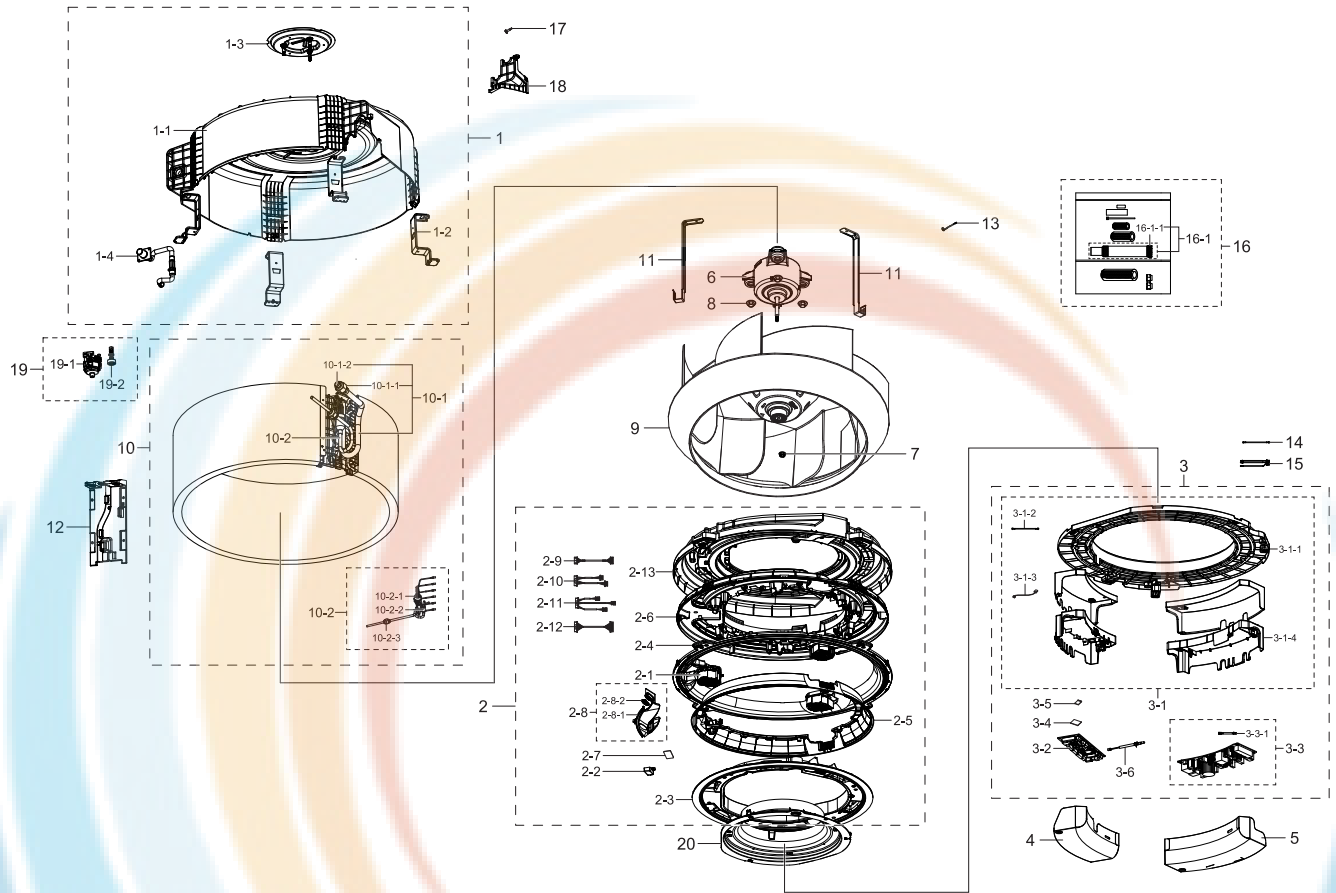
## Exploded Views and Parts List

No.	Lvl.	Loc.	Material Code	Description & Specification	SNA	Qty.
2-8-1	4		DB64-03204A	WINDOW DISPLAY-B; WINDOW DISPLAY-B,PMMA,T	SA	1
2-8-2	4		DB92-03855A	ASSY PCB DISPLAY; DISPLAY PBA,AC9000K,97*	SA	1
2-9	3		DB93-06159B	ASSY CONNECTOR WIRE-DISPLAY; 10,2095,26,B	SA	1
2-10	3		DB93-16336A	ASSY CONNECTOR WIRE-DC SIGNAL; 10,2095,26	SA	1
2-11	3		DB93-15861B	ASSY CONNECTOR WIRE-DC SIGNAL; 12,2095,26	SA	1
2-12	3	A2303	DB94-06052A	ASSY TRAY DRAIN; AC145KN4PBH1	SA	1
3	2		DB92-04035B	ASSY KIT; INDOOR,360CST UNITED,DVM 360 CS	SNA	1
3-1	3		DB90-09386C	ASSY CASE CONTROL; 360CST	SA	1
3-1-1	4	C1140	DB63-03763A	COVER-BELL MOUTH; AC145KN4PBH1,HIPS,T2.0,	SA	1
3-1-2	4		DB61-06767A	PLATE CONTROL-LOW; AC145KN4PBH1,GI-SGCC,T	SNA	1
3-1-3	4		DB61-06768A	CASE CONTROL-IN; MPPE,T2.5,EBONY BLACK	SNA	1
3-1-4	4	A0646	DB93-08805B	ASSY CONNECTOR WIRE-EARTH; 1,1015,18,YEL/	SA	1
3-2	3	A2748	DB92-04034B	ASSY PCB MAIN; MAIN,360CST UNITED,260*108	SA	1
3-2-1	4		DB93-13688A	ASSY CONNECTOR WIRE-DC SIGNAL; 2,1007,24,	SA	1
3-2-2	4		DB94-06087A	ASSY HEAT SINK 1; POWER PBA,AC9000K,194*9	SNA	1
3-2-2-1	5		0205-000178	GREASE-SILICON; YG6111,WHITE, for assembl	SA	1
3-2-3	4		DB94-06486A	ASSY HEAT SINK 5; MAIN,360CST UNITED,260*	SNA	1
3-2-3-1	5		0205-000178	GREASE-SILICON; YG6111,WHITE, for assembl	SA	1
3-2-4	4		DB92-02793A	ASSY FUNCTION; COMM,DVM NASA_CST,Y	SA	1
3-2-5	4	A0694	DB92-04020A	ASSY PCB SUB; SUB,20*25,Indoor EEPROM,Yes	SA	1
3-3	3	A3189	DB95-05009A	ASSY THERMISTOR IN-ROOM; 10Kohm 3%,103HW	SA	1
4	2		DB61-06766A	PLATE CONTROL-UP; AC145KN4PBH1,GI-SGCC,T0	SA	1
5	2	A0916	DB94-02739G	ASSY DRAIN-HOSE INSTALL; GLOBAL 4WAY	SA	1
5-1	3		DB94-02719B	ASSY DRAIN-HOSE; 250,NS1004PXEA,CLAMP TYP	SA	1
5-1-1	4		DB90-06130A	ASSY HOLDER-CLAMP; NS1004PXEA	SA	1
6	2		DB31-00577D	MOTOR BLOWER; FMC9731SSE,97W,DC310V,NO FE	SA	1
7	2		DB60-00406A	FASTENER-NUT FLANGE; SWRCH10A	SA	1

No.	Lvl.	Loc.	Material Code	Description & Specification	SNA	Qty.
8	2		DB60-00427A	FASTENER-NUT WASHER; FASTENER-NUT WASHER,	SA	3
9	2		DB94-05978A	ASSY FAN TURBO; AC9000K	SA	1
10	2	A1062	DB96-22361B	ASSY EVAP-UNIT; 4TVS0048B100NA	SA	1
10-1	3		DB96-22154B	ASSY TUBE EVAP OUT; AM130KN4PBH1	SNA	1
10-1-1	4	N0027	DB60-30010D	FASTENER-NUT FLARE; BRASS	SA	1
10-1-2	4	C1284	DB63-00360D	COVER-FLARE; SH24AC6,PA,5/8"	SA	1
10-2	3		DB96-22323B	ASSY TUBE EVAP-IN; 4TVS0048B100NA,IN	SNA	1
10-2-1	4	T0128	DB62-00541E	TUBE-FILTER; MXD-18K214A,C1220T-H,T1,OD19	SA	1
10-2-2	4	N0027	DB60-30010B	FASTENER-NUT FLARE; BRASS	SA	1
10-2-3	4		DB62-11474B	VALVE GEAR EXPAN; .,4.0,2000,1000	SA	1
11	2		DB61-02669B	HOLDER-EVAP; 4WAY CST,STS430,T0.6,21.8,25	SA	2
12	2		DB61-06561A	CASE-PARTITION; HIPS,T1.6,NATURAL	SA	1
13	2	S0242	DB81-00635A	SPRING ETC-SENSOR; DVM-SYSTEM,STS304,R2.5	SA	2
14	2	A0646	DB93-07990B	ASSY CONNECTOR WIRE-EARTH; 1,1015,18,YEL/	SA	1
15	2		DB32-00239A	SENSOR TEMP; 103HW,360CST UNITED_EVA IN-O	SA	1
16	2		DB90-09385A	ASSY COVER-PIPE; 360CST	SA	1
17	2		DB94-06097B	ASSY TRAY DRAIN-PUMP; 360 CST	SNA	1
17-1	3		DB95-04462E	SWITCH FLOAT; 700.5mm,2.5,1600mm,SMH250	SA	1
17-2	3		DB31-00649G	PUMP DRAIN; 400,1200,1600	SA	1
18	2		DB60-00150A	SCREW-SPECIAL; HWH,M4,L26,ZPC(WHT),SWRCH1	SA	2
19	2		DB90-09398B	ASSY COVER-INLET; 360CST EXP	SA	1
20	3		DB61-05788A	BRACKET-CONDUIT; G-4WAY,MINI 4WAY,SGCC-M,	SA	1

# 1. AM036KN4DCH/AA (manufactured 12/2016 or earlier)

## Exploded View



## Parts List

No.	Lvl.	Loc.	Material Code	Description & Specification	SNA	Qty.
1	2	A2676	DB90-09380A	ASSY CABI BODY; 360CST LRG	SA	1
1-1	3		DB61-06570A	BODY; HIPS,T2.0,BLACK,L	SA	1
1-2	3	P0229	DB61-06585A	PLATE-HANGER; PLATE-HANGER,GI-SGCC,T1.6	SA	4
1-3	3	A2803	DB90-05821A	ASSY BRACKET MOTOR; Global 4W-CST	SA	1
1-4	3		DB94-06051A	ASSY HOSE DRAIN; AC145KN4PBH1	SA	1
2	2		DB90-09387A	ASSY FRAME OUTLET; 360CST	SA	1
2-1	3		DB31-00674A	MOTOR BLDC FAN; Booster Fan motor,2800,12	SA	3
2-2	3		DB61-06616A	CASE PCB-SUB; PC	SA	1
2-3	3		DB90-09379A	ASSY COVER-UP; 360CST	SA	1
2-4	3		DB90-09396A	ASSY FRAME OUTLET-UP; 360CST LRG	SA	1
2-5	3		DB90-09397A	ASSY COVER-OUTLET; 360CST	SA	1
2-6	3		DB90-09463A	ASSY FRAME OUTLET-LOW; 360CST	SA	1
2-7	3	A0694	DB92-02805A	ASSY PCB SUB; RECEIVER,DVM NASA_MASTER_N,	SA	1

Exploded Views and Parts List

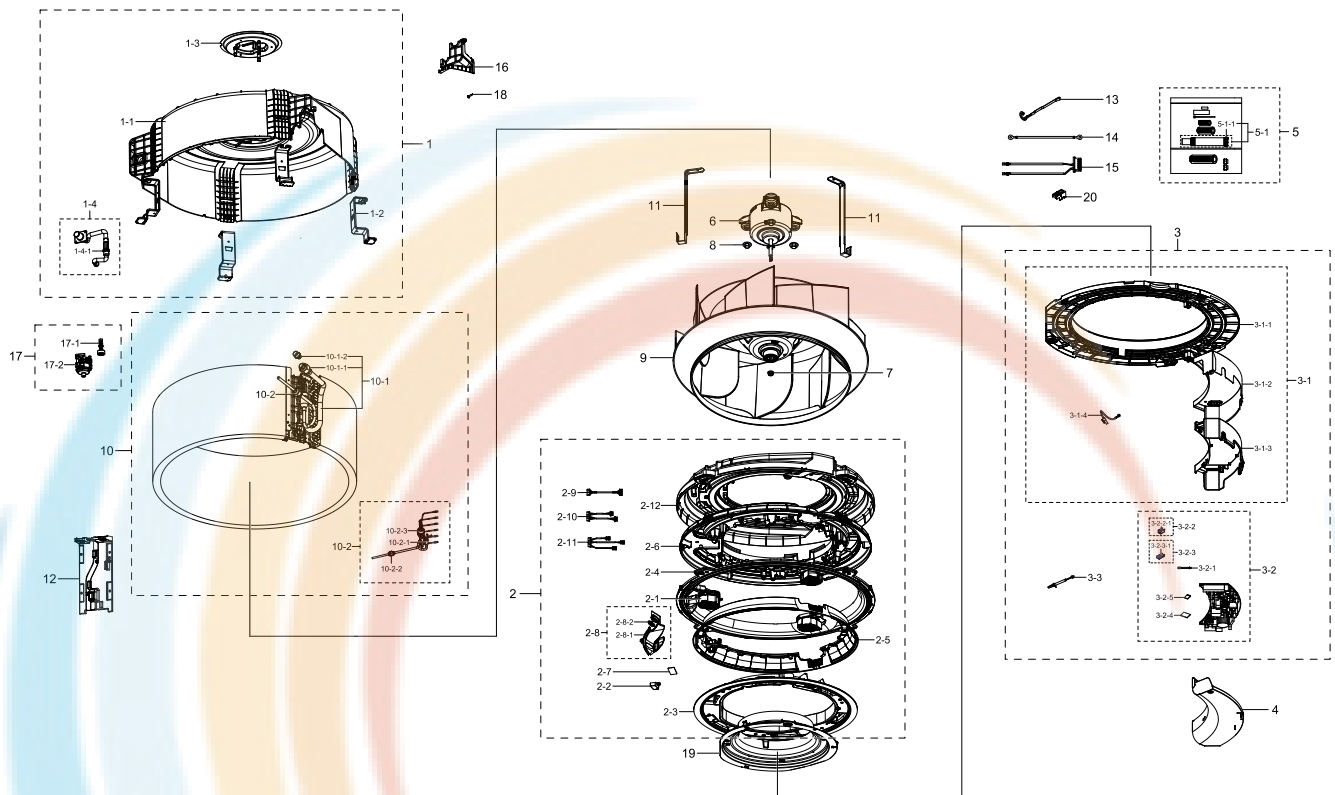
No.	Lvl.	Loc.	Material Code	Description & Specification	SNA	Qty.
2-8	3	A0882	DB93-15822A	ASSY DISPLAY; 360CST	SA	1
2-8-1	4		DB64-03204A	WINDOW DISPLAY-B; WINDOW DISPLAY-B,PMMA,T	SA	1
2-8-2	4		DB92-03855A	ASSY PCB DISPLAY; DISPLAY PBA,AC9000K,97*	SA	1
2-9	3		DB93-06159A	ASSY CONNECTOR WIRE-DISPLAY; 10,2095,26,B	SA	1
2-10	3		DB93-15860A	ASSY CONNECTOR WIRE-DC SIGNAL; 11,2095,24	SA	1
2-11	3		DB93-15861A	ASSY CONNECTOR WIRE-DC SIGNAL; 12,2095,26	SA	1
2-12	3		DB93-15862A	ASSY CONNECTOR WIRE-DC SIGNAL; 15,2095,26	SA	1
2-13	3	A2303	DB94-06052A	ASSY TRAY DRAIN; AC145KN4PBH1	SA	1
3	2		DB92-03857D	ASSY KIT; ASSY KIT,AC9000K,360 CST,DVM AS	SNA	1
3-1	3		DB90-09386B	ASSY CASE CONTROL; 360CST NORTH AMERICA	SA	1
3-1-1	4	C1140	DB63-03763A	COVER-BELL MOUTH; AC145KN4PBH1,HIPS,T2.0,	SA	1
3-1-2	4	A0646	DB93-07990A	ASSY CONNECTOR WIRE-EARTH; 1,1015,18,YEL/	SA	1
3-1-3	4	A0646	DB93-08805B	ASSY CONNECTOR WIRE-EARTH; 1,1015,18,YEL/	SA	1
3-1-4	4		DB90-09444B	ASSY CASE CONTROL-LOW; 360CST NORTH AMERI	SA	1
3-2	3	A2748	DB92-03856B	ASSY PCB MAIN; MAIN PBA,AM6000H,160*60.5,	SA	1
3-3	3		DB92-03854A	ASSY PCB POWER; POWER PBA,AC9000K,194*93,	SA	1
3-3-1	4		DB93-13688A	ASSY CONNECTOR WIRE-DC SIGNAL; 2,1007,24,	SA	1
3-4	3		DB92-02793A	ASSY FUNCTION; COMM,DVM NASA_CST,Y	SA	1
3-5	3		DB93-12483A	ASSY PCB SUB-EEPROM; SUB,DVMPLUS4 UP,20*2	SA	1
3-6	3	A3189	DB95-05009A	ASSY THERMISTOR IN-ROOM; 10Kohm 3%,103HW	SA	1
4	2		DB90-09442A	ASSY PLATE-CONTROL; 360CST MAIN	SA	1
5	2		DB61-06591A	PLATE CONTROL-UP; AC145KN4PBH1,GI-SGCC,T0	SA	1
6	2		DB31-00577C	MOTOR BLOWER; FMC9731SSD,97W,DC310V	SA	1
7	2		DB60-00406A	FASTENER-NUT FLANGE; SWRCH10A	SA	1
8	2		DB60-00427A	FASTENER-NUT WASHER; FASTENER-NUT WASHER,	SA	3
9	2		DB94-05978A	ASSY FAN TURBO; AC9000K	SA	1
10	2	A1062	DB96-22361A	ASSY EVAP-UNIT; AM130KN4PBH1	SA	1



No.	Lvl.	Loc.	Material Code	Description & Specification	SNA	Qty.
10-1	3		DB96-22154B	ASSY TUBE EVAP OUT; AM130KN4PBH1	SNA	1
10-1-1	4	N0027	DB60-30010D	FASTENER-NUT FLARE; BRASS	SA	1
10-1-2	4	C1284	DB63-00360D	COVER-FLARE; SH24AC6,PA,5/8"	SA	1
10-2	3	A2355	DB96-22323A	ASSY TUBE EVAP IN; AM130KN4PBH1	SNA	1
10-2-1	4		DB62-11474A	VALVE GEAR EXPAN; .,4.0,2000,500	SA	1
10-2-2	4	T0128	DB62-00541E	TUBE-FILTER; MXD-18K214A,C1220T-H,T1,OD19	SA	1
10-2-3	4		DB60-30010B	FASTENER-NUT FLARE; BRASS	SA	1
11	2		DB61-02669B	HOLDER-EVAP; 4WAY CST,STS430,T0.6,21.8,25	SA	2
12	2		DB61-06561A	CASE-PARTITION; HIPS,T1.6,NATURAL	SA	1
13	2	S0242	DB81-00635A	SPRING ETC-SENSOR; DVM-SYSTEM,STS304,R2.5	SA	2
14	2	A0646	DB93-07990A	ASSY CONNECTOR WIRE-EARTH; 1,1015,18,YEL/	SA	1
15	2		DB95-05011D	ASSY THERMISTOR IN; 10Kohm 3%,103HW,7P,4	SA	1
16	2	A0916	DB94-02739G	ASSY DRAIN-HOSE INSTALL; GLOBAL 4WAY	SA	1
16-1	3		DB94-02719B	ASSY DRAIN-HOSE; 250,NS1004PXEA,CLAMP TYP	SA	1
16-1-1	4		DB90-06130A	ASSY HOLDER-CLAMP; NS1004PXEA	SA	1
17	2		DB60-00150A	SCREW-SPECIAL; HWH,M4,L26,ZPC(WHT),SWRCH1	SA	2
18	2		DB90-09385A	ASSY COVER-PIPE; 360CST	SA	1
19	2		DB94-06097A	ASSY TRAY DRAIN-PUMP; AC145KN4PBH1	SNA	1
19-1	3		DB31-00649B	PUMP DRAIN; 400,PBT,1200,UL224,550,PVC,VW	SA	1
19-2	3		DB95-04462B	SWITCH FLOAT; 700.5mm,2.5,1200mm,SMH250	SA	1
20	2		DB90-09398B	ASSY COVER-INLET; 360CST EXP	SA	1

# 1. AM036KN4DCH/AA Ver. 01 (manufactured 01/2017 or later)

## Exploded View



## Parts List

No.	Lvl.	Loc.	Material Code	Description & Specification	SNA	Qty.
1	2	A2676	DB90-09380A	ASSY CABI BODY; 360CST LRG	SA	1
1-1	3		DB61-06570A	BODY; HIPS,T2.0,BLACK,L	SA	1
1-2	3	P0229	DB61-06585A	PLATE-HANGER; PLATE-HANGER,GI-SGCC,T1.6	SA	4
1-3	3	A2803	DB90-05821A	ASSY BRACKET MOTOR; Global 4W-CST	SA	1
1-4	3		DB94-06051A	ASSY HOSE DRAIN; AC145KN4PBH1	SA	1
1-4-1	4	V0020	DB62-09665A	VALVE CHECK; PPO,BLACK,1-1,8	SA	1
2	2		DB90-09387B	ASSY FRAME OUTLET; 360 CST	SA	1
2-1	3		DB31-00674A	MOTOR BLDC FAN; Booster Fan motor,2800,12	SA	3
2-2	3		DB61-06616A	CASE PCB-SUB; PC	SA	1
2-3	3		DB90-09379A	ASSY COVER-UP; 360CST	SA	1
2-4	3		DB90-09396A	ASSY FRAME OUTLET-UP; 360CST LRG	SA	1
2-5	3		DB90-09397A	ASSY COVER-OUTLET; 360CST	SA	1
2-6	3		DB90-09463A	ASSY FRAME OUTLET-LOW; 360CST	SA	1
2-7	3	A0694	DB92-02805A	ASSY PCB SUB; RECEIVER,DVM NASA_MASTER_N,	SA	1
2-8	3	A0882	DB93-15822A	ASSY DISPLAY; 360CST	SA	1

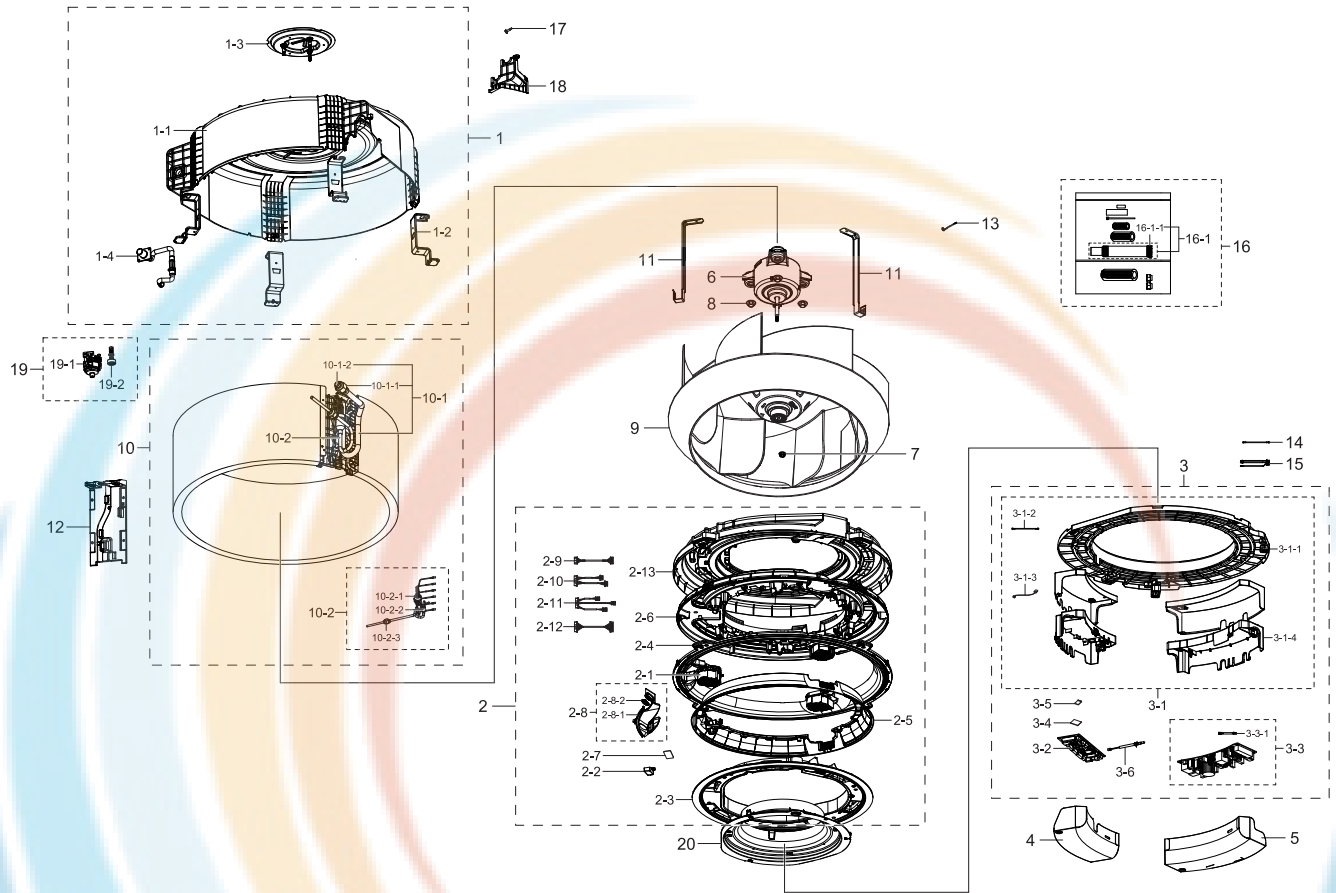
## Exploded Views and Parts List

No.	Lvl.	Loc.	Material Code	Description & Specification	SNA	Qty.
2-8-1	4		DB64-03204A	WINDOW DISPLAY-B; WINDOW DISPLAY-B,PMMA,T	SA	1
2-8-2	4		DB92-03855A	ASSY PCB DISPLAY; DISPLAY PBA,AC9000K,97*	SA	1
2-9	3		DB93-06159B	ASSY CONNECTOR WIRE-DISPLAY; 10,2095,26,B	SA	1
2-10	3		DB93-16336A	ASSY CONNECTOR WIRE-DC SIGNAL; 10,2095,26	SA	1
2-11	3		DB93-15861B	ASSY CONNECTOR WIRE-DC SIGNAL; 12,2095,26	SA	1
2-12	3	A2303	DB94-06052A	ASSY TRAY DRAIN; AC145KN4PBH1	SA	1
3	2		DB92-04035B	ASSY KIT; INDOOR,360CST UNITED,DVM 360 CS	SNA	1
3-1	3		DB90-09386C	ASSY CASE CONTROL; 360CST	SA	1
3-1-1	4	C1140	DB63-03763A	COVER-BELL MOUTH; AC145KN4PBH1,HIPS,T2.0,	SA	1
3-1-2	4		DB61-06767A	PLATE CONTROL-LOW; AC145KN4PBH1,GI-SGCC,T	SNA	1
3-1-3	4		DB61-06768A	CASE CONTROL-IN; MPPE,T2.5,EBONY BLACK	SNA	1
3-1-4	4	A0646	DB93-08805B	ASSY CONNECTOR WIRE-EARTH; 1,1015,18,YEL/	SA	1
3-2	3	A2748	DB92-04034B	ASSY PCB MAIN; MAIN,360CST UNITED,260*108	SA	1
3-2-1	4		DB93-13688A	ASSY CONNECTOR WIRE-DC SIGNAL; 2,1007,24,	SA	1
3-2-2	4		DB94-06087A	ASSY HEAT SINK 1; POWER PBA,AC9000K,194*9	SNA	1
3-2-2-1	5		0205-000178	GREASE-SILICON; YG6111,WHITE, for assembl	SA	1
3-2-3	4		DB94-06486A	ASSY HEAT SINK 5; MAIN,360CST UNITED,260*	SNA	1
3-2-3-1	5		0205-000178	GREASE-SILICON; YG6111,WHITE, for assembl	SA	1
3-2-4	4		DB92-02793A	ASSY FUNCTION; COMM,DVM NASA_CST,Y	SA	1
3-2-5	4	A0694	DB92-04020A	ASSY PCB SUB; SUB,20*25,Indoor EEPROM,Yes	SA	1
3-3	3	A3189	DB95-05009A	ASSY THERMISTOR IN-ROOM; 10Kohm 3%,103HW	SA	1
4	2		DB61-06766A	PLATE CONTROL-UP; AC145KN4PBH1,GI-SGCC,T0	SA	1
5	2	A0916	DB94-02739G	ASSY DRAIN-HOSE INSTALL; GLOBAL 4WAY	SA	1
5-1	3		DB94-02719B	ASSY DRAIN-HOSE; 250,NS1004PXEA,CLAMP TYP	SA	1
5-1-1	4		DB90-06130A	ASSY HOLDER-CLAMP; NS1004PXEA	SA	1
6	2		DB31-00577D	MOTOR BLOWER; FMC9731SSE,97W,DC310V,NO FE	SA	1
7	2		DB60-00406A	FASTENER-NUT FLANGE; SWRCH10A	SA	1

No.	Lvl.	Loc.	Material Code	Description & Specification	SNA	Qty.
8	2		DB60-00427A	FASTENER-NUT WASHER; FASTENER-NUT WASHER,	SA	3
9	2		DB94-05978A	ASSY FAN TURBO; AC9000K	SA	1
10	2	A1062	DB96-22361B	ASSY EVAP-UNIT; 4TVS0048B100NA	SA	1
10-1	3		DB96-22154B	ASSY TUBE EVAP OUT; AM130KN4PBH1	SNA	1
10-1-1	4	N0027	DB60-30010D	FASTENER-NUT FLARE; BRASS	SA	1
10-1-2	4	C1284	DB63-00360D	COVER-FLARE; SH24AC6,PA,5/8"	SA	1
10-2	3		DB96-22323B	ASSY TUBE EVAP-IN; 4TVS0048B100NA,IN	SNA	1
10-2-1	4	T0128	DB62-00541E	TUBE-FILTER; MXD-18K214A,C1220T-H,T1,OD19	SA	1
10-2-2	4	N0027	DB60-30010B	FASTENER-NUT FLARE; BRASS	SA	1
10-2-3	4		DB62-11474B	VALVE GEAR EXPAN; .,4.0,2000,1000	SA	1
11	2		DB61-02669B	HOLDER-EVAP; 4WAY CST,STS430,T0.6,21.8,25	SA	2
12	2		DB61-06561A	CASE-PARTITION; HIPS,T1.6,NATURAL	SA	1
13	2	S0242	DB81-00635A	SPRING ETC-SENSOR; DVM-SYSTEM,STS304,R2.5	SA	2
14	2	A0646	DB93-07990B	ASSY CONNECTOR WIRE-EARTH; 1,1015,18,YEL/	SA	1
15	2		DB32-00239A	SENSOR TEMP; 103HW,360CST UNITED_EVA IN-O	SA	1
16	2		DB90-09385A	ASSY COVER-PIPE; 360CST	SA	1
17	2		DB94-06097B	ASSY TRAY DRAIN-PUMP; 360 CST	SNA	1
17-1	3		DB95-04462E	SWITCH FLOAT; 700.5mm,2.5,1600mm,SMH250	SA	1
17-2	3		DB31-00649G	PUMP DRAIN; 400,1200,1600	SA	1
18	2		DB60-00150A	SCREW-SPECIAL; HWH,M4,L26,ZPC(WHT),SWRCH1	SA	2
19	2		DB90-09398B	ASSY COVER-INLET; 360CST EXP	SA	1
20	3		DB61-05788A	BRACKET-CONDUIT; G-4WAY,MINI 4WAY,SGCC-M,	SA	1

# 1. AM048KN4DCH/AA (manufactured 12/2016 or earlier)

## Exploded View



## Parts List

No.	Lvl.	Loc.	Material Code	Description & Specification	SNA	Qty.
1	2	A2676	DB90-09380A	ASSY CABI BODY; 360CST LRG	SA	1
1-1	3		DB61-06570A	BODY; HIPS,T2.0,BLACK,L	SA	1
1-2	3	P0229	DB61-06585A	PLATE-HANGER; PLATE-HANGER,GI-SGCC,T1.6	SA	4
1-3	3	A2803	DB90-05821A	ASSY BRACKET MOTOR; Global 4W-CST	SA	1
1-4	3		DB94-06051A	ASSY HOSE DRAIN; AC145KN4PBH1	SA	1
2	2		DB90-09387A	ASSY FRAME OUTLET; 360CST	SA	1
2-1	3		DB31-00674A	MOTOR BLDC FAN; Booster Fan motor,2800,12	SA	3
2-2	3		DB61-06616A	CASE PCB-SUB; PC	SA	1
2-3	3		DB90-09379A	ASSY COVER-UP; 360CST	SA	1
2-4	3		DB90-09396A	ASSY FRAME OUTLET-UP; 360CST LRG	SA	1
2-5	3		DB90-09397A	ASSY COVER-OUTLET; 360CST	SA	1
2-6	3		DB90-09463A	ASSY FRAME OUTLET-LOW; 360CST	SA	1
2-7	3	A0694	DB92-02805A	ASSY PCB SUB; RECEIVER,DVM NASA_MASTER_N,	SA	1

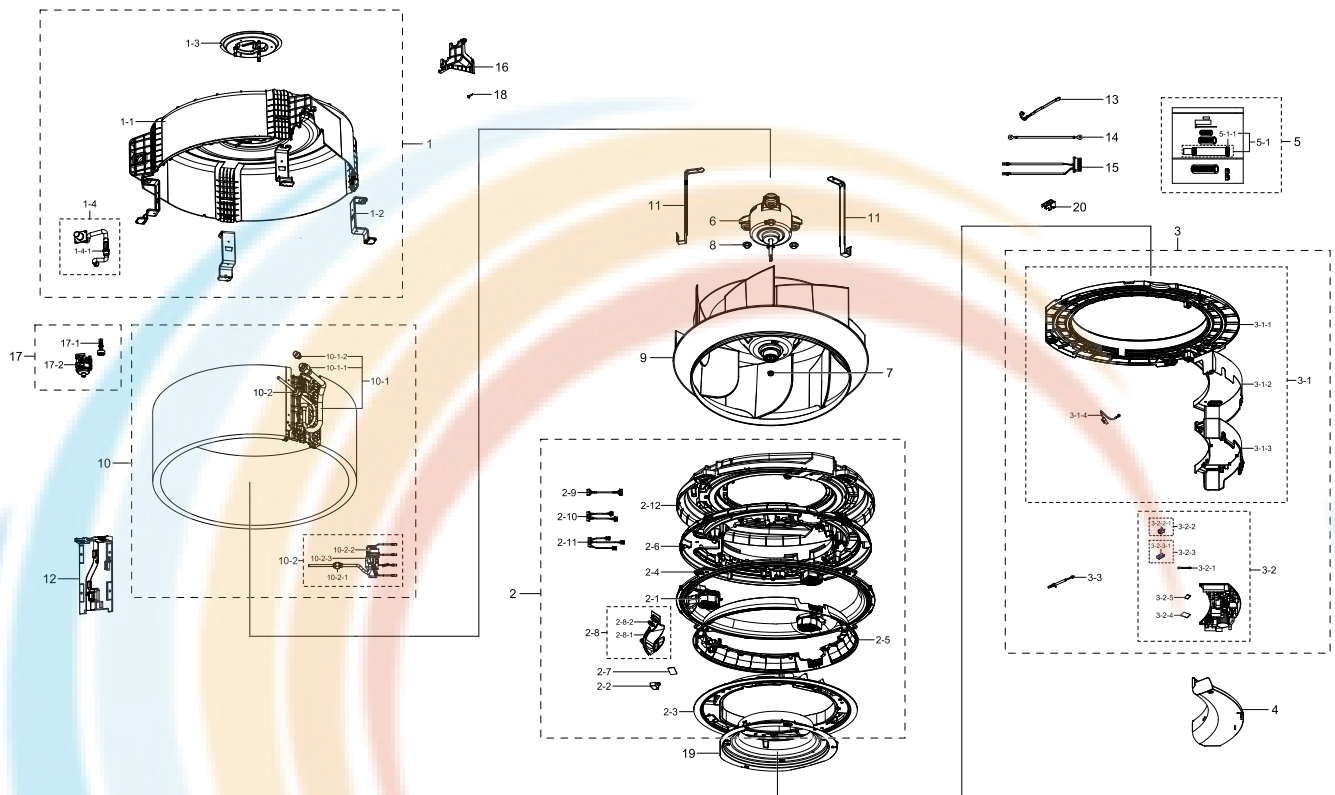
Exploded Views and Parts List

No.	Lvl.	Loc.	Material Code	Description & Specification	SNA	Qty.
2-8	3	A0882	DB93-15822A	ASSY DISPLAY; 360CST	SA	1
2-8-1	4		DB64-03204A	WINDOW DISPLAY-B; WINDOW DISPLAY-B,PMMA,T	SA	1
2-8-2	4		DB92-03855A	ASSY PCB DISPLAY; DISPLAY PBA,AC9000K,97*	SA	1
2-9	3		DB93-06159A	ASSY CONNECTOR WIRE-DISPLAY; 10,2095,26,B	SA	1
2-10	3		DB93-15860A	ASSY CONNECTOR WIRE-DC SIGNAL; 11,2095,24	SA	1
2-11	3		DB93-15861A	ASSY CONNECTOR WIRE-DC SIGNAL; 12,2095,26	SA	1
2-12	3		DB93-15862A	ASSY CONNECTOR WIRE-DC SIGNAL; 15,2095,26	SA	1
2-13	3	A2303	DB94-06052A	ASSY TRAY DRAIN; AC145KN4PBH1	SA	1
3	2		DB92-03857D	ASSY KIT; ASSY KIT,AC9000K,360 CST,DVM AS	SNA	1
3-1	3		DB90-09386B	ASSY CASE CONTROL; 360CST NORTH AMERICA	SA	1
3-1-1	4	C1140	DB63-03763A	COVER-BELL MOUTH; AC145KN4PBH1,HIPS,T2.0,	SA	1
3-1-2	4	A0646	DB93-07990A	ASSY CONNECTOR WIRE-EARTH; 1,1015,18,YEL/	SA	1
3-1-3	4	A0646	DB93-08805B	ASSY CONNECTOR WIRE-EARTH; 1,1015,18,YEL/	SA	1
3-1-4	4		DB90-09444B	ASSY CASE CONTROL-LOW; 360CST NORTH AMERI	SA	1
3-2	3	A2748	DB92-03856B	ASSY PCB MAIN; MAIN PBA,AM6000H,160*60.5,	SA	1
3-3	3		DB92-03854A	ASSY PCB POWER; POWER PBA,AC9000K,194*93,	SA	1
3-3-1	4		DB93-13688A	ASSY CONNECTOR WIRE-DC SIGNAL; 2,1007,24,	SA	1
3-4	3		DB92-02793A	ASSY FUNCTION; COMM,DVM NASA_CST,Y	SA	1
3-5	3		DB93-12483A	ASSY PCB SUB-EEPROM; SUB,DVMPLUS4 UP,20*2	SA	1
3-6	3	A3189	DB95-05009A	ASSY THERMISTOR IN-ROOM; 10Kohm 3%,103HW	SA	1
4	2		DB90-09442A	ASSY PLATE-CONTROL; 360CST MAIN	SA	1
5	2		DB61-06591A	PLATE CONTROL-UP; AC145KN4PBH1,GI-SGCC,T0	SA	1
6	2		DB31-00577C	MOTOR BLOWER; FMC9731SSD,97W,DC310V	SA	1
7	2		DB60-00406A	FASTENER-NUT FLANGE; SWRCH10A	SA	1
8	2		DB60-00427A	FASTENER-NUT WASHER; FASTENER-NUT WASHER,	SA	3
9	2		DB94-05978A	ASSY FAN TURBO; AC9000K	SA	1
10	2	A1062	DB96-22361A	ASSY EVAP-UNIT; AM130KN4PBH1	SA	1

No.	Lvl.	Loc.	Material Code	Description & Specification	SNA	Qty.
10-1	3		DB96-22154B	ASSY TUBE EVAP OUT; AM130KN4PBH1	SNA	1
10-1-1	4	N0027	DB60-30010D	FASTENER-NUT FLARE; BRASS	SA	1
10-1-2	4	C1284	DB63-00360D	COVER-FLARE; SH24AC6,PA,5/8"	SA	1
10-2	3	A2355	DB96-22323A	ASSY TUBE EVAP IN; AM130KN4PBH1	SNA	1
10-2-1	4		DB62-11474A	VALVE GEAR EXPAN; ,4.0,2000,500	SA	1
10-2-2	4	T0128	DB62-00541E	TUBE-FILTER; MXD-18K214A,C1220T-H,T1,OD19	SA	1
10-2-3	4		DB60-30010B	FASTENER-NUT FLARE; BRASS	SA	1
11	2		DB61-02669B	HOLDER-EVAP; 4WAY CST,STS430,T0.6,21.8,25	SA	2
12	2		DB61-06561A	CASE-PARTITION; HIPS,T1.6,NATURAL	SA	1
13	2	S0242	DB81-00635A	SPRING ETC-SENSOR; DVM-SYSTEM,STS304,R2.5	SA	2
14	2	A0646	DB93-07990A	ASSY CONNECTOR WIRE-EARTH; 1,1015,18,YEL/	SA	1
15	2		DB95-05011D	ASSY THERMISTOR IN; 10Kohm 3%,103HW,7P,4	SA	1
16	2	A0916	DB94-02739G	ASSY DRAIN-HOSE INSTALL; GLOBAL 4WAY	SA	1
16-1	3		DB94-02719B	ASSY DRAIN-HOSE; 250,NS1004PXEA,CLAMP TYP	SA	1
16-1-1	4		DB90-06130A	ASSY HOLDER-CLAMP; NS1004PXEA	SA	1
17	2		DB60-00150A	SCREW-SPECIAL; HWH,M4,L26,ZPC(WHT),SWRCH1	SA	2
18	2		DB90-09385A	ASSY COVER-PIPE; 360CST	SA	1
19	2		DB94-06097A	ASSY TRAY DRAIN-PUMP; AC145KN4PBH1	SNA	1
19-1	3		DB31-00649B	PUMP DRAIN; 400,PBT,1200,UL224,550,PVC,VW	SA	1
19-2	3		DB95-04462B	SWITCH FLOAT; 700.5mm,2.5,1200mm,SMH250	SA	1
20	2		DB90-09398B	ASSY COVER-INLET; 360CST EXP	SA	1

# 1. AM048KN4DCH/AA Ver. 01 (manufactured 01/2017 or later)

## Exploded View



## Parts List

No.	Lvl.	Loc.	Material Code	Description & Specification	SNA	Qty.
1	2	A2676	DB90-09380A	ASSY CABI BODY; 360CST LRG	SA	1
1-1	3		DB61-06570A	BODY; HIPS,T2.0,BLACK,L	SA	1
1-2	3	P0229	DB61-06585A	PLATE-HANGER; PLATE-HANGER,GI-SGCC,T1.6	SA	4
1-3	3	A2803	DB90-05821A	ASSY BRACKET MOTOR; Global 4W-CST	SA	1
1-4	3		DB94-06051A	ASSY HOSE DRAIN; AC145KN4PBH1	SA	1
1-4-1	4	V0020	DB62-09665A	VALVE CHECK; NS1004PXEA,PPO,74.5,0.05~1MP	SA	1
2	2		DB90-09387B	ASSY FRAME OUTLET; 360 CST	SA	1
2-1	3		DB31-00674A	MOTOR BLDC FAN; Booster Fan motor,2800,12	SA	3
2-2	3		DB61-06616A	CASE PCB-SUB; PC	SA	1
2-3	3		DB90-09379A	ASSY COVER-UP; 360CST	SA	1
2-4	3		DB90-09396A	ASSY FRAME OUTLET-UP; 360CST LRG	SA	1
2-5	3		DB90-09397A	ASSY COVER-OUTLET; 360CST	SA	1
2-6	3		DB90-09463A	ASSY FRAME OUTLET-LOW; 360CST	SA	1
2-7	3	A0694	DB92-02805A	ASSY PCB SUB; RECEIVER,DVM NASA_MASTER_N,	SA	1
2-8	3	A0882	DB93-15822A	ASSY DISPLAY; 360CST	SA	1



## Exploded Views and Parts List

No.	Lvl.	Loc.	Material Code	Description & Specification	SNA	Qty.
2-8-1	4		DB64-03204A	WINDOW DISPLAY-B; WINDOW DISPLAY-B,PMMA,T	SA	1
2-8-2	4		DB92-03855A	ASSY PCB DISPLAY; DISPLAY PBA,AC9000K,97*	SA	1
2-9	3		DB93-06159B	ASSY CONNECTOR WIRE-DISPLAY; 10,2095,26,B	SA	1
2-10	3		DB93-16336A	ASSY CONNECTOR WIRE-DC SIGNAL; 10,2095,26	SA	1
2-11	3		DB93-15861B	ASSY CONNECTOR WIRE-DC SIGNAL; 12,2095,26	SA	1
2-12	3	A2303	DB94-06052A	ASSY TRAY DRAIN; AC145KN4PBH1	SA	1
3	2		DB92-04035B	ASSY KIT; INDOOR,360CST UNITED,DVM 360 CS	SNA	1
3-1	3		DB90-09386C	ASSY CASE CONTROL; 360CST	SA	1
3-1-1	4	C1140	DB63-03763A	COVER-BELL MOUTH; AC145KN4PBH1,HIPS,T2.0,	SA	1
3-1-2	4		DB61-06767A	PLATE CONTROL-LOW; AC145KN4PBH1,GI-SGCC,T	SNA	1
3-1-3	4		DB61-06768A	CASE CONTROL-IN; MPPE,T2.5,EBONY BLACK	SNA	1
3-1-4	4	A0646	DB93-08805B	ASSY CONNECTOR WIRE-EARTH; 1,1015,18,YEL/	SA	1
3-2	3	A2748	DB92-04034B	ASSY PCB MAIN; MAIN,360CST UNITED,260*108	SA	1
3-2-1	4		DB93-13688A	ASSY CONNECTOR WIRE-DC SIGNAL; 2,1007,24,	SA	1
3-2-2	4		DB94-06087A	ASSY HEAT SINK 1; POWER PBA,AC9000K,194*9	SNA	1
3-2-2-1	5		0205-000178	GREASE-SILICON; YG6111,WHITE, for assembl	SA	1
3-2-3	4		DB94-06486A	ASSY HEAT SINK 5; MAIN,360CST UNITED,260*	SNA	1
3-2-3-1	5		0205-000178	GREASE-SILICON; YG6111,WHITE, for assembl	SA	1
3-2-4	4		DB92-02793A	ASSY FUNCTION; COMM,DVM NASA_CST,Y	SA	1
3-2-5	4	A0694	DB92-04020A	ASSY PCB SUB; SUB,20*25,Indoor EEPROM,Yes	SA	1
3-3	3	A3189	DB95-05009A	ASSY THERMISTOR IN-ROOM; 10Kohm 3%,103HW	SA	1
4	2		DB61-06766A	PLATE CONTROL-UP; AC145KN4PBH1,GI-SGCC,T0	SA	1
5	2	A0916	DB94-02739G	ASSY DRAIN-HOSE INSTALL; GLOBAL 4WAY	SA	1
5-1	3		DB94-02719B	ASSY DRAIN-HOSE; 250,NS1004PXEA,CLAMP TYP	SA	1
5-1-1	4		DB90-06130A	ASSY HOLDER-CLAMP; NS1004PXEA	SA	1
6	2		DB31-00577D	MOTOR BLOWER; FMC9731SSE,97W,DC310V,NO FE	SA	1
7	2		DB60-00406A	FASTENER-NUT FLANGE; SWRCH10A	SA	1

No.	Lvl.	Loc.	Material Code	Description & Specification	SNA	Qty.
8	2		DB60-00427A	FASTENER-NUT WASHER; FASTENER-NUT WASHER,	SA	3
9	2		DB94-05978A	ASSY FAN TURBO; AC9000K	SA	1
10	2	A1062	DB96-22361B	ASSY EVAP-UNIT; 4TVS0048B100NA	SA	1
10-1	3		DB96-22154B	ASSY TUBE EVAP OUT; AM130KN4PBH1	SNA	1
10-1-1	4	N0027	DB60-30010D	FASTENER-NUT FLARE; BRASS	SA	1
10-1-2	4	C1284	DB63-00360D	COVER-FLARE; SH24AC6,PA,5/8"	SA	1
10-2	3		DB96-22323B	ASSY TUBE EVAP-IN; 4TVS0048B100NA,IN	SNA	1
10-2-1	4	N0027	DB60-30010B	FASTENER-NUT FLARE; BRASS	SA	1
10-2-2	4		DB62-11474B	VALVE GEAR EXPAN; .,4.0,2000,1000	SA	1
10-2-3	4	T0128	DB62-00541E	TUBE-FILTER; MXD-18K214A,C1220T-H,T1,OD19	SA	1
11	2		DB61-02669B	HOLDER-EVAP; 4WAY CST,STS430,T0.6,21.8,25	SA	2
12	2		DB61-06561A	CASE-PARTITION; HIPS,T1.6,NATURAL	SA	1
13	2	S0242	DB81-00635A	SPRING ETC-SENSOR; DVM-SYSTEM,STS304,R2.5	SA	2
14	2	A0646	DB93-07990B	ASSY CONNECTOR WIRE-EARTH; 1,1015,18,YEL/	SA	1
15	2		DB32-00239A	SENSOR TEMP; 103HW,360CST UNITED_EVA IN-O	SA	1
16	2		DB90-09385A	ASSY COVER-PIPE; 360CST	SA	1
17	2		DB94-06097B	ASSY TRAY DRAIN-PUMP; 360 CST	SNA	1
17-1	3		DB95-04462E	SWITCH FLOAT; 700.5mm,2.5,1600mm,SMH250	SA	1
17-2	3		DB31-00649G	PUMP DRAIN; 400,1200,1600	SA	1
18	2		DB60-00150A	SCREW-SPECIAL; HWH,M4,L26,ZPC(WHT),SWRCH1	SA	2
19	2		DB90-09398B	ASSY COVER-INLET; 360CST EXP	SA	1
20	3		DB61-05788A	BRACKET-CONDUIT; G-4WAY,MINI 4WAY,SGCC-M,	SA	1